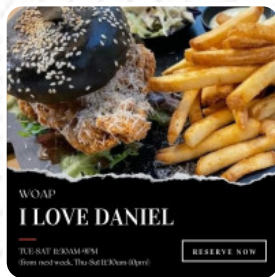




Platform145 Menu

<https://menulist.menu>

145 Willis St, Wellington, New Zealand, Churton Park Village New Zealand
+6443330322 - <https://www.facebook.com/105360945409815>



Here you can find the [menu](#) of Platform145 in Churton Park Village New Zealand. At the moment, there are **15** menus and drinks on the food list. You can inquire about **seasonal or weekly deals** via phone.

Platform145 Menu



Salads

COLESLAW

Non Alcoholic Drinks

WATER

Vegetarian

CAULIFLOWER

Sandwiches

CHICKEN BURGER

Drinks

BEER

Starters & Salads

FRENCH FRIES

Sauces

MAYO

Chicken Dishes

GARLIC CHICKEN

Restaurant Category

VEGAN

Ingredients Used

GARLIC

Chicken

FRIED CHICKEN

CRISPY CHICKEN

These Types Of Dishes Are Being Served

CHICKEN

BURGER

DESSERTS

Platform145 Menu



Platform145

145 Willis St, Wellington, New Zealand, Churton Park Village New Zealand

Opening Hours:

Tuesday 11:30-21:00
Wednesday 11:30-21:00
Thursday 11:30-22:00
Friday 11:30-22:00
Saturday 11:30-22:00
Sunday 11:30-20:30

Made with menulist.menu

 gallery image

