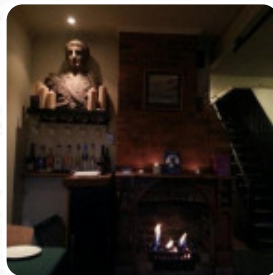
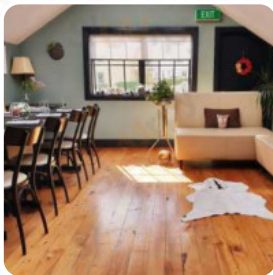


Bistro On Willis Menu

<https://menulist.menu>

270 Willis Street, Wellington 6040, New Zealand, Churton Park Village New Zealand
+6443828882 - <http://www.bistroonwillis.co.nz>



Here you can find the [menu](#) of **Bistro On Willis** in Churton Park Village New Zealand. At the moment, there are 9 dishes and drinks on the food list. You can inquire about **seasonal or weekly deals** via phone.

Bistro On Willis Menu



Non Alcoholic Drinks

WATER

Sushi Rolls

SUSHI

Pasta

CARBONARA

Vegetarian

GREEN BEANS

Sauces

GRAVY

Hot Drinks

COFFEE

Dessert

CHEESECAKE

TIRAMISU

Restaurant Category

ITALIAN

DESSERT

Ingredients Used

DUCK

BEANS

These Types Of Dishes Are Being Served

MEAT

CHICKEN

LAMB

PASTA

Bistro On Willis Menu



Bistro On Willis

270 Willis Street, Wellington
6040, New Zealand, Churton
Park Village New Zealand

Opening Hours:

 gallery image