

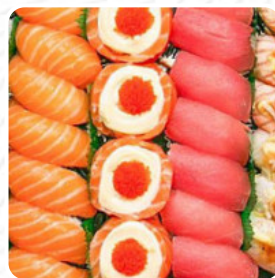
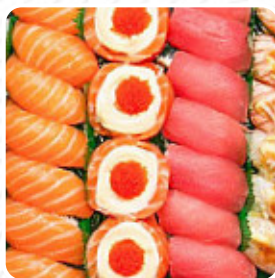


Goldish Sushi Sashimi Mongkok Menu

<https://menulist.menu>

32 Dundas St, Mong Kok, Kowloon, Hong Kong SAR

(+852)21561213 - <https://www.foodpanda.hk/restaurant/v0oj/goldish-sushi-sashimi-mongkok>



Here you can find the [menu](#) of *Goldish Sushi Sashimi Mongkok* in Kowloon. At the moment, there are **118** menus and drinks on the menu. You can inquire about **changing offers** via phone.

Goldish Sushi Sashimi Mongkok Menu



Lunch Menu

TERIYAKI UNAGI WITH RICE

Side Dishes

UNAGI FRIED RICE

Soft Drinks

COCA-COLA

Donburi Bowls

SALMON DONBURI

Salad 沙律

CRAB ROE SALAD

貝類刺身

SCALLOP SASHIMI (4 PCS)

Chinmi

WASABI OCTOPUS

Sushi & Sashimi Platter

SALMON SASHIMI (6 PCS)

Asian Drinks

LOTTE MILKIS

Uncategorized

YELLOWTAIL SASHIMI (6 PCS)

Donburi

ASSORTED SASHIMI DONBURI

YESSO SCALLOP DONBURI

Drinks

SCHWEPES CREAM SODA

FANTA ORANGE SODA

Roll

CALIFORNIA ROLL (2 PCS)

SALMON ROLL (1 PC)

Hand Roll

CRAB ROE SALAD HAND ROLL

LOBSTER SALAD HAND ROLL

Beverage

GRAPE FLAVOR C&C

LOTTE ALOE VERA

Sashimi

TUNA SASHIMI (6 PCS)

ARK SHELL SASHIMI (4 PCS)

YESSO SCALLOP SASHIMI

Popular

SALMON ROLL WITH CRAB ROE SUSHI (1 PC)

FRIED PRAWN ROLL (3 PCS)

FLAME-SEARED CRAB STICK SUSHI (2 PCS)

Entrées

BLACK SESAME MINI OCTOPUS

SEASONED SCALLOP SKIN

Goldish Sushi Sashimi Mongkok Menu



SPICY WHELK MEAT

CHINESE SHREDDED KELP

Hand Rolls

SALMON HAND ROLL

TUNA HAND ROLL

CALIFORNIA HAND ROLL

UNAGI HAND ROLL

Sashimi Platter

SASHIMI PLATTER A (49 PCS)

SASHIMI PLATTER B (44 PCS)

SASHIMI PLATTER C (42 PCS)

SASHIMI PLATTER D (30 PCS)

Alcoholic Beverage

SHIRAKABEGURA GINJO SAKE (180ML)

TAKARA SHIRAKABEGURA MIO DRY
SPARKLING SAKE (300 ML)

JAPANESE NAKANO UMESHU PLUM
WINE (300ML)

JAPANESE SHO CHIKU BAI SAKE
(240ML)

Japanese Rice Bowl

FLAME-SEARED 3 STYLES DONBURI

SCALLOP FISH ROE DONBURI

AMAEBI DONBURI

SLOW-GRILLED BEEF CHUCK RICE
BOWL

Flame-seared Sushi

AKASAKA JAPANESE OMELETTE SUSHI
(2 PCS)

FLAME-SEARED HALIBUT SUSHI (2 PCS)

FLAME-SEARED SEA BREAM SUSHI (2
PCS)

FLAME-SEARED BEEF CHUCK SUSHI (2
PCS)

FLAME-SEARED TUNA SUSHI (2 PCS)

FLAME-SEARED BABY WHITE SHRIMP
SUSHI (2 PCS)

Sushi Roll And Hand Roll

TUNA ROLL (1 PC)

CRAB STICK ROLL (1 PC)

CUCUMBER ROLL (1 PC)

JAPANESE OMELETTE ROLL (1 PC)

KABAYAKI SEA BREAM HAND ROLL

SALMON SALAD HAND ROLL

CRAB STICK SALAD HAND ROLL

Sashimi Series

SEA BREAM SASHIMI (6 PCS)

KAJIKI SASHIMI (6 PCS)

ARGENTINE RED SHRIMP SASHIMI (3
PCS)

HERRING SASHIMI (8 PCS)

TIGER PRAWN SASHIMI (8 PCS)

OCTOPUS SASHIMI (8 PCS)

SURF CLAM SASHIMI (8 PCS)

AMAEBI SASHIMI (12 PCS)

Japanese Mains

SALMON STEAK RICE

HALIBUT STEAK RICE

TOKYO BEEF CUBES WITH RICE

CRAB ROE SALMON FRIED RICE

Goldish Sushi Sashimi Mongkok Menu



HOKKAIDO FRIED UDON

JAPANESE FRIED CHICKEN RICE IN
TERIYAKI SAUCE

BITE-SIZED PORK IN GRAVY SAUCE
WITH RICE

ITSUKI COLD NOODLES

RICE WITH CHICKEN FILLET IN
JAPANESE SAUCE

KABAYAKI MACKEREL RICE

Sushi Box

NO.1 SUSHI BOX (36 PCS)

NO.2 SUSHI BOX (39 PCS)

NO.3 SUSHI BOX (39 PCS)

NO.4 SUSHI BOX (35 PCS)

NO.5 SUSHI BOX (29 PCS)

NO.6 SUSHI BOX (29 PCS)

NO.7 SUSHI BOX (40 PCS)

NO.8 SUSHI BOX (39 PCS)

NO.9 SUSHI BOX (40 PCS)

NO.10 SUSHI BOX (30 PCS)

NO.11 SUSHI BOX (35 PCS)

NO.12 SUSHI BOX (20 PCS)

Warship Roll

SEA URCHIN WARSHIP ROLL (2 PCS)

SALMON ROE WARSHIP ROLL (2 PCS)

CHEESE CRAB ROE WARSHIP ROLL (2
PCS)

SAKURA SQUID WARSHIP ROLL (2 PCS)

GOLDEN SQUID WARSHIP ROLL (2 PCS)

COD ROE WARSHIP ROLL (2 PCS)

WELSH ONION AND FOIE GRAS SAUCE
GUNKAN SUSHI (2 PCS)

IMITATION LOBSTER SALAD WARSHIP
ROLL (2 PCS)

SALMON WARSHIP ROLL (2 PCS)

WHELK MEAT WARSHIP ROLL (2 PCS)

CRAB ROE WARSHIP ROLL (2 PCS)

MINI OCTOPUS WARSHIP ROLL (2 PCS)

SHREDDED KELP WARSHIP ROLL (2
PCS)

WASABI OCTOPUS WARSHIP ROLL (2
PCS)

Sushi

SALMON BELLY SUSHI (2 PCS)

FLAME-SEARED SALMON SUSHI (2 PCS)

SALMON SUSHI (2 PCS)

YELLOWTAIL SUSHI (2 PCS)

TUNA SUSHI (2 PCS)

KAJIKI BELLY SUSHI (2 PCS)

SEA BREAM SUSHI (2 PCS)

KABAYAKI SEA BREAM SUSHI (2 PCS)

COOKED YESSO SCALLOP SUSHI (2
PCS)

LARGE OCTOPUS SUSHI (2 PCS)

GEODUCK SUSHI (2 PCS)

SURF CLAM SUSHI (2 PCS)

CUTTLEFISH SUSHI (2 PCS)

RAW AMAEBI SUSHI (2 PCS)

HERRING SUSHI (2 PCS)

Goldish Sushi Sashimi Mongkok Menu



Goldish Sushi Sashimi Mongkok

32 Dundas St, Mong Kok,
Kowloon, Hong Kong SAR

Opening Hours:

Monday 12:00 -23:59
Tuesday 12:00 -23:59
Wednesday 12:00 -23:59
Thursday 12:00 -23:59
Friday 12:00 -23:59
Saturday 12:00 -23:59
Sunday 12:00 -23:59

Made with menulist.menu

