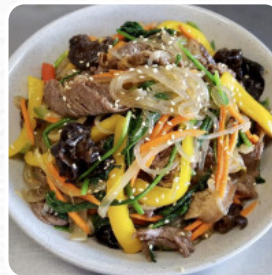




Sushimon Menu

<https://menulist.menu>

337 Centre Rd, Bentleigh East I-3204, Australia, BENTLEIGH EAST
+61399133404,+61411211588 - <https://www.facebook.com/sushimon.bentleigh/>



On this site, you can find the **complete menu** of Sushimon from BENTLEIGH EAST. Currently, there are **34** menus and drinks up for grabs. For *changing offers*, please contact the owner of the restaurant directly. You can also contact them through their website.

Sushimon Menu

Appetizers

TERIYAKI BEEF

Sushi Rolls

SUSHI

Gnocchi

GNOCCHI

Sandwiches

CALIFORNIA SANDWICH

Side Dishes

RICE

Appetizer

TEMPURA

Main Courses - Teriyaki

BEEF TERIYAKI

Bento Menü

CHICKEN KATSU CURRY

Sushi Bar Entrees

CHIRASHI

Restaurant Category

VEGETARIAN

Sushi

SASHIMI

CALIFORNIA ROLL

Chicken

CHICKEN KATSU

FRIED CHICKEN

Indian

CHICKEN CURRY

CHICKEN CURRY

Japanese Specialties

CHICKEN TERIYAKI

MISO SOUP

BENTO

TERIYAKI CHICKEN

These Types Of Dishes Are Being Served

MEAT

FISH

SOUP

CHICKEN

Ingredients Used



TOFU

MISO

AVOCADO

SEAFOOD

TUNA

CHEESE

PORK MEAT

SALMON



Sushimon Menu

BEEF

PRAWNS



Sushimon Menu



Sushimon

337 Centre Rd, Bentleigh East I-
3204, Australia, BENTLEIGH
EAST

Opening Hours:

Monday 11:00-17:00
Tuesday 11:00-17:00
Wednesday 11:00-17:00
Thursday 11:00-17:00
Friday 11:00-20:00
Saturday 11:00-20:00

Made with menulist.menu

 gallery image

