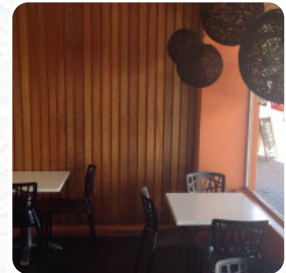
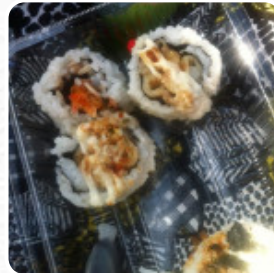




Eastern Sushi Bar Menu

<https://menulist.menu>

329 The Parade | Beulah Park, Norwood, South Australia 5067, Australia
+61883325551 - <http://eastern-sushi-bar.edan.io/>



A comprehensive [menu](#) of Eastern [Sushi](#) Bar from Norwood covering all 38 dishes and drinks can be found here on the menu. For **seasonal or weekly deals**, please get in touch via phone or use the contact details provided on the website.

Eastern Sushi Bar Menu



Sushi Rolls

SUSHI

Gnocchi

GNOCCHI

Seafood

PRAWN

Sushi

SASHIMI

Sauces

MAYO

Appetizer

TEMPURA

Dessert

PANCAKE

Indian

CHICKEN CURRY

Special Sushi

VEGETABLE TEMPURA

Noodle

RAMEN

Spezial-Nudeln

UDON

Salads

SEAWEED SALAD

SALMON SALAD

Extras

WASABI

SOY SAUCE

Side Dishes

BROWN RICE

RICE

Chicken

CHICKEN ROLL

CHICKEN KATSU

Fish

SMOKED SALMON

SALMON ROLL

Restaurant Category

VEGETARIAN

BAR

Japanese Specialties

BENTO

CHICKEN TERIYAKI

TERIYAKI CHICKEN

MISO SOUP

These Types Of Dishes Are

Eastern Sushi Bar Menu



Being Served



SALAD

MEAT

FISH

SOUP

CHICKEN

Ingredients Used

SEAFOOD

SALMON

TUNA

VEGETABLES

WHITE RICE

MISO

Eastern Sushi Bar Menu



Eastern Sushi Bar

329 The Parade | Beulah Park,
Norwood, South Australia 5067,
Australia

Opening Hours:
Monday 09:00-18:30
Tuesday 09:00-18:30
Wednesday 09:00-18:30
Thursday 09:00-18:30
Friday 09:00-18:30
Saturday 09:00-18:30
Sunday 09:00-18:30

Made with menulist.menu

 gallery image

