

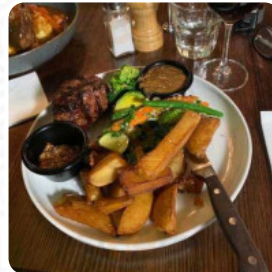


Railway Menu

<https://menulist.menu>

65 Gingell St, Castlemaine I-3450, Australia, CASTLEMAINE

+61354721250



A comprehensive [menu](#) of Railway from CASTLEMAINE covering all 11 menus and drinks can be found here on the card. For changing offers, please get in touch via phone or use the contact details provided on the website.

What [User](#) likes about Railway:

The perfect olde world venue for a cold winter's night. It was nice to see many of the old features of the building retained Log fire burning added to the atmosphere. An extensive specials board menu but we stuck with a favourite of fish and chips which didn't disappoint. A good selection of local wines. Waiting staff were attentive. We arrived just prior to the busy dinner time hence the empty tables in my photo. We... [read more](#). If you want to **a cocktail after work** and hang out with friends, Railway from CASTLEMAINE is a good bar, there are also *delectable vegetarian recipes* on the menu. Also worth mentioning at this restaurant are the **courses from the Australian continent**.

Railway Menu



Snacks

CROQUETTES

Seafood

CALAMARI

Schnitzel

SCHNITZEL

Rice

RISOTTO

Indian

CHICKEN CURRY

Fish dishes

FISH

FISH AND CHIPS

Ingredients Used

BEEF

DUCK

SEAFOOD

CHICKEN

CHICKEN BREAST

***These types of dishes are
being served***

DESSERTS

TUNA STEAK

SALAD

PASTA

FISH

Railway Menu



Railway

65 Gingell St, Castlemaine I-
3450, Australia, CASTLEMAINE

Opening Hours:

Monday 15:00 -23:00
Tuesday 15:00 -23:00
Wednesday 15:00 -23:00
Thursday 15:00 -23:00
Friday 15:00 -00:30
Saturday 12:00 -00:30
Sunday 12:00 -23:00

Made with menulist.menu

 gallery image

