

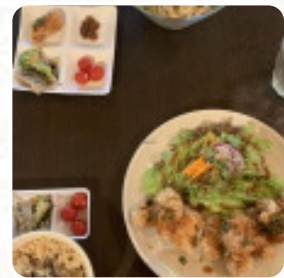


Nagi Shokudo Menu

<https://menulist.menu>

Uguisudanicho 15-10, Royal Palace Shibuya 103, Tokyo, Japan, 150-0032

+81334613280 - <https://twitter.com/nagishokudo>



Here you can find the [menu](#) of Nagi Shokudo in Tokyo. At the moment, there are 17 dishes and drinks on the menu. You can inquire about **changing offers** via phone. What [User](#) doesn't like about Nagi Shokudo: my first meal in japan was at this place. I had soy roasted with rice and a chocolate dessert. it was simple, but good enough for the price/place, even if it wasn't something that returned me while in tokio. worth a visit if they asked me, and I would probably try again if I returned to tokio. [read more](#). With the large range of **coffee and tea specialties**, a visit to Nagi Shokudo becomes even more attractive, and it's made with lots of fresh vegetables, fish and meat, *easily digestible Japanese meals* prepared.

Nagi Shokudo Menu



Oriental dishes

FALAFEL

Pizza

WESTERN

Sweets

CHOCOLATE CAKE

Side Order

BROWN RICE

Hauptgerichte - Bento Menü

KARAAGE

Sweets & Desserts

BANANA BREAD

Restaurant Category

DESSERT

VEGAN

These types of dishes are being served

SOUP

SALAD

BREAD

Ingredients Used

VEGETABLES

CHICKEN

MISO

MEAT

BANANA

CHOCOLATE

Nagi Shokudo Menu



Nagi Shokudo

Uguisudanicho 15-10, Royal
Palace Shibuya 103, Tokyo,
Japan, 150-0032

Opening Hours:
Wednesday 06:00-21:30
Thursday 06:00-21:30
Friday 06:00-21:30
Saturday 06:00-21:30
Sunday 12:00-15:00
Monday 06:00-21:30
Tuesday 06:00-21:30

Made with menulist.menu

