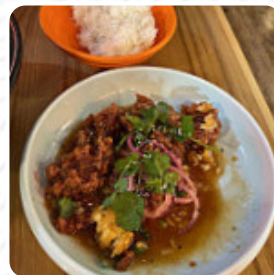
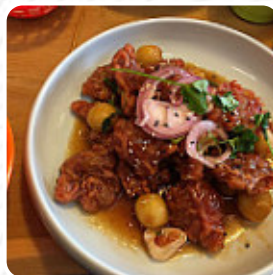




Belly Worship Menu

<https://menulist.menu>

547 Dominion Road, Mount Eden I-1041, New Zeland, New Zealand



On this website, you can find the complete menu of Belly Worship from Mount Eden. Currently, there are **17** menus and drinks available. For *seasonal or weekly deals*, please contact the owner of the restaurant directly.

You can also contact them through their website. What [User](#) likes about Belly Worship: the menu is about half vegan. it's mock meat hard so I didn't expect to like much, but I was pleasantly surprised. we tried the 'prawn' noodles I had never loved, really prawn so I found the textur strange), but I liked the lychee 'pork' and really liked the tofu salad. my companion also had the "Hähnchen"-Buo, that was the bigger bao I have ever seen. the whole part was huge. in any case go back and try some other t... [read more](#). The diner is accessible and can therefore also be used with a wheelchair or physical limitations. What [User](#) doesn't like about

Belly Worship:

Several vegan options (noted in blue on the menu) made with Chinese mock meats. Tasty fresh with a good variety. Bao buns and tofu chips are good. Food served in plastic baskets so fast food rather than fine dining [read more](#). Get ready for extraordinary combinations of different products at Belly Worship in Mount Eden that perfectly embody the concept of a excellent fusion cuisine, Many guests show especially their enthusiasm for the versatile, tasty Chinese cuisine. The Asian fusion cuisine is also an important part of Belly Worship. Anyone who finds the normal and generally known meals too boring should approach with a willingness to experiment and try some unexpected combination of ingredients consume, On the menu there are also several **Asian menus**.

Belly Worship Menu



Salads

TOFU SALAD

Gnocchi

GNOCCHI

Seafood

PRAWN

Starters & Salads

POTATOE CHIPS

Chicken

POPCORN CHICKEN

Restaurant Category

VEGAN

Mexican dishes

BURRITO

TACO

BURRITOS

***These types of dishes are
being served***

NOODLES

BURGER

SALAD

Ingredients Used

TOFU

LYCHEE

PORK MEAT

CHICKEN

MEAT

Belly Worship Menu



Belly Worship

547 Dominion Road, Mount Eden
I-1041, New Zealand, New
Zealand

Opening Hours:

Monday 12:00-22:00
Tuesday 12:00-22:00
Wednesday 12:00-22:00
Thursday 12:00-22:00
Friday 12:00-22:30
Saturday 12:00-22:30
Sunday 12:00-21:00

Made with menulist.menu

