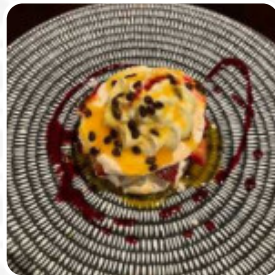




## *The Griffith Exies Menu*

<https://menulist.menu>  
6-12 Jondaryan Ave, Griffith, Australia  
+61269621211 - <https://www.exies.com.au>



A complete [menu](#) of The Griffith Exies from Griffith covering all 9 dishes and drinks can be found here on the menu. For changing offers, please get in touch via phone or use the contact details provided on the website.

What [User](#) likes about The Griffith Exies:

A great place to relax, get a feed and a drink and chat with friends. The staff are friendly and there are members draws. Membership is not expensive and entitles you to discounts on food and drinks. [read more](#). The diner and its premises are wheelchair accessible and thus reachable with a wheelchair or physiological limitations. What

[User](#) doesn't like about The Griffith Exies:

I loved the renovations done to the place, absolutely stunning. I found with the menu wasn't really a great variety and when I did order my meal, I ordered lamb cutlets I didn't really enjoy it didn't really have much of any flavours really. Food: 1 Service: 4 Atmosphere: 4 [read more](#). At The [Griffith](#) Exies in Griffith, [fine Australian menus](#) are freshly cooked for you with a lot of affection and the authentic ingredients such as bush tomatoes and caviar limes, You can take a break at the bar with a cool beer or other alcoholic and non-alcoholic drinks. Of course, the right drink to accompany a meal is a must; for this purpose, this **gastropub** offers you a comprehensive selection of fine, regional alcoholic beverages like beer or wine.

# *The Griffith Exies Menu*



## *Alcoholic Drinks*

BEER

## *Fish dishes*

FISH

## *Schnitzel*

SCHNITZEL

## *Breakfast*

PORRIDGE

## *Beef*

RUMP

## *Mexican Food*

EMPANADAS

## *Drinks*

DRINKS

## *Side dishes*

STEAMED RICE

RICE

## *Ingredients Used*



TERNERA

BEEF

BUTTER

CORN

## *These types of dishes are being served*

TUNA STEAK

TOSTADAS

LAMB

BREAD

# *The Griffith Exies Menu*



## *The Griffith Exies*

6-12 Jondaryan Ave, Griffith,  
Australia

### **Opening Hours:**

Monday 10:00 -23:00  
Tuesday 10:00 -23:00  
Wednesday 10:00 -00:00  
Thursday 10:00 -00:00  
Friday 10:00 -00:00  
Saturday 10:00 -00:00  
Sunday 11:00 -22:00

Made with [menulist.menu](https://menulist.menu)

 gallery image

