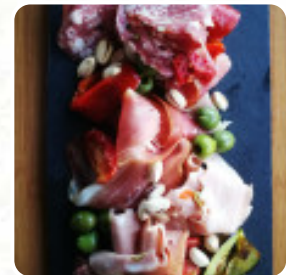
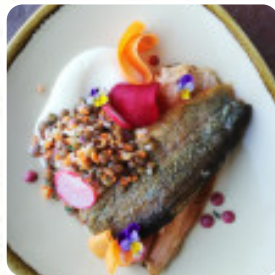




The Alps at Deer Park Menu

<https://menulist.menu>

72-74 Glen Innes Road | Deer Park Motor Inn, Armidale, New South Wales 2350, Australia
+61267729999 - <http://www.thealpsatdeerpark.com.au>



Here you can find the menu of The Alps at Deer Park in Armidale. At the moment, there are 18 dishes and drinks on the food list. You can inquire about **changing offers** via phone. What [User](#) likes about The Alps at Deer Park: When The Alps reopened after lockdown, my husband and I booked in for dinner on their second night open. The food, the service, the ambiance, was all delightful. You can tell these guys really care about what they're doing. The quality is outstanding and they deserve to do well. This isn't somewhere you want to go if a simple pub meal will suffice, this place is something special. The food portions are ginormous for... [read more](#). When the weather is pleasant you can also eat and drink outside, and there is complimentary WLAN. In the The Alps at Deer Park from [Armidale](#) you can enjoy courses as they are common in Europe, In addition, guests of the local can enjoy tasty fondue, Zürich-style sliced meat, or even try a few crispy Rösti and dive into the *Swiss cuisine*. If you want to have breakfast, a **tasty brunch** awaits you, It's possible to chill out at the bar with a freshly tapped beer or other alcoholic and non-alcoholic drinks.

The Alps at Deer Park Menu



Alcoholic Drinks

BEER

Fish dishes

FISH AND CHIPS

Breakfast Menu

GRANOLA

Restaurant Category

FRENCH

ITALIAN

DESSERT

Ingredients Used

DUCK

MEAT

BUTTER

*These types of dishes are
being served*

TUNA STEAK

ICE CREAM

PASTA

DESSERTS

BREAD

LAMB

FISH

The Alps at Deer Park Menu



The Alps at Deer Park

72-74 Glen Innes Road | Deer
Park Motor Inn, Armidale, New
South Wales 2350, Australia

Opening Hours:

Monday 17:30-20:30
Tuesday 17:30-20:30
Wednesday 17:30-20:30
Thursday 17:30-20:30
Friday 17:30-20:30
Saturday 17:30-20:30

Made with menulist.menu

 gallery image

