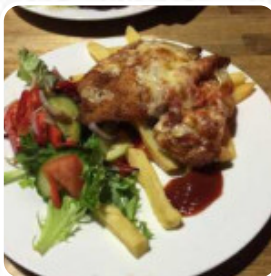




Commercial Hotel Menu

<https://menulist.menu>

238 Whitehall St, Yarraville, Maribyrnong, Victoria 3013, Australia, Melbourne
+61396899354 - <http://www.commercialhotelyarraville.com.au>



On this webpage, you can find the *complete menu* of Commercial Hotel from Melbourne. Currently, there are 18 courses and drinks up for grabs. For **seasonal or weekly deals**, please contact the owner of the restaurant directly. You can also contact them through their website. What [User](#) likes about Commercial Hotel: it is a great place to see a new emerging band or an old salty dog of an act. during this visit, it was a local cover act that would look more like the bands themselves. [read more](#). When the weather is pleasant you can also eat and drink outside. What [User](#) doesn't like about Commercial Hotel:

The beer garden here has so much promise physically. But unfortunately the place was empty and dated, the food was awful and the \$5 shots were so gross that they ended up being abandoned so we could walk to a better pub nearby. Probably won't ever bother visiting this place again. [read more](#). At Commercial Hotel, delicious cuisine from all over the world are directly made for you, Moreover, the sweet desserts of the house shine not only on children's plates and in children's eyes. The experience of various sports events is also a highlight, when you are in this **sports bar**, Additionally, they serve you typical Australian dishes with products like bush tomatoes and finger limes.

Commercial Hotel Menu



Alcoholic Drinks

BEER

Tex Mex

POTATO WEDGES

Dessert

RASPBERRY CHEESECAKE

Sweets & Desserts

APPLE PIE

Drinks

DRINKS

Biscuits and Cookies

CHEESECAKE

Sauces

SAUCE

Restaurant Category

DESSERT

Starters & Salads

FRIES

POTATOE CHIPS

Ingredients Used



RASPBERRY

MOZZARELLA PASTA

CHICKEN

*These types of dishes are
being served*

SALAD

STEAK FRIES

TUNA STEAK

Commercial Hotel Menu



Commercial Hotel

238 Whitehall St, Yarraville,
Maribyrnong, Victoria 3013,
Australia, Melbourne

Opening Hours:
Sunday 12:00-21:00
Thursday 16:00-22:00
Friday 16:00-3:00
Saturday 16:00-3:00

 gallery image