

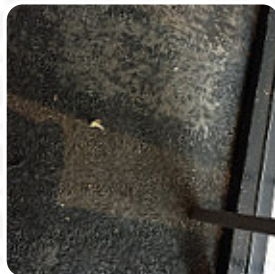
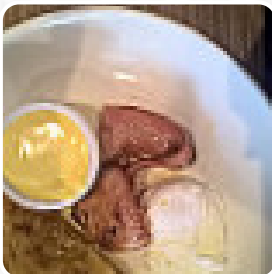


## ***The Coffee Club Menu***

<https://menulist.menu>

Captain Cook Highway | Smithfield Shopping Centre, Shop 166, Smithfield, Queensland  
4870, Australia

+61740381033,+61740410522 - <http://www.coffeecub.com.au/>



Here you can find the menu of The Coffee Club in Smithfield. At the moment, there are 18 meals and drinks on the food list. You can inquire about **changing offers** via phone. What [User](#) likes about The Coffee Club: We are regulars here, it is what it says, "coffee club." So we didn't try to order hot water, or anything unusual, how these girls keep their temper is beyond me reading some of the reviews. They have a small menu but they do it all well. The staff are always busy, always polite, and never, in my experience rude. I think some people are. Overall, and I am not easily pleased, this is highly recommended. [read more](#). The restaurant also offers the possibility to sit outside and eat and drink in pleasant weather, and into the accessible rooms also come customers with wheelchairs or physical limitations. What [User](#) doesn't like about The Coffee Club: Went to the coffee club today my friend ordered a cup of peppermint tea with Lemon and honey on the side and I asked for a cup of hot water as I can't have caffeine they said they were not allowed to serve a cup of hot water so I asked if their peppermint tea was peppermint tea or peppermint infusion they couldn't tell me the girl was quite rude My friend's tea was not drinkable as the tea pot was full of leaves and left... [read more](#). At The Coffee Club in Smithfield, there's a **delicious brunch** in the morning where you can eat as much as you want feast, For a snack, the delicious *sandwiches*, small salads and other snacks are suitable. Not to be overlooked is also the comprehensive diversity of coffee and tea specialties in this locale, In addition, you'll find sweet delicacies, cake, simple snacks and chilled refreshments and hot drinks here.

# *The Coffee Club Menu*



## *Non alcoholic drinks*

WATER

## *Eggs & Pancakes*

OMELETTE

## *Dessert*

CREPES

## *Soft drinks*

WATER

## *American Food*

EGGS BENEDICT

## *Hot Drink*

HOT CHOCOLATE

## *Coffee*

CAFÉ

## *Hash Browns and Sides*

SCRAMBLED EGGS

## *Super Foods*

AVOCADO TOAST

## *Ingredients Used*

AVOCADO

BEEF

SALMON

TOMATOES

## *These types of dishes are being served*

SALAD

BURGER

TOSTADAS

PASTA

PANINI

# *The Coffee Club Menu*



## *The Coffee Club*

Captain Cook Highway |  
Smithfield Shopping Centre,  
Shop 166, Smithfield,  
Queensland 4870, Australia

### **Opening Hours:**

Monday 06:00 -23:00  
Tuesday 06:00 -23:00  
Wednesday 06:00 -23:00  
Thursday 06:00 -23:00  
Friday 06:00 -23:00  
Saturday 06:00 -23:00  
Sunday 06:00 -23:00

Made with [menulist.menu](https://menulist.menu)

 gallery image

