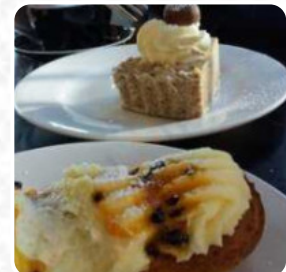
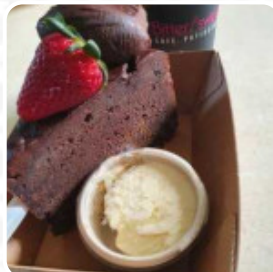
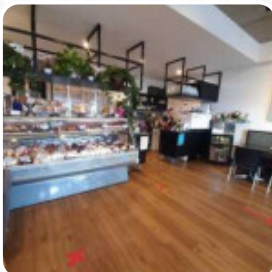




Bittersweet Cafe Patisserie Menu

<https://menulist.menu>
48 Watonga St, Port Macquarie I-2444, Australia
+61265824008



On this website, you can find the complete menu of Bittersweet Cafe Patisserie from Port Macquarie. Currently, there are 6 menus and drinks up for grabs. For seasonal or weekly deals, please contact the owner of the restaurant directly. You can also contact them through their website. What [User](#) likes about Bittersweet Cafe Patisserie:

We went to Bitter Sweet after a walk along the beach. The food is really good and tasty. We had the chicken burger, eggs Benny, salt and pepper squid with salad and vege quiche. The service was good and quick. Must visit if you're near Lighthouse Beach. [read more](#). At Bittersweet Cafe Patisserie from Port Macquarie you have the opportunity to taste delicious vegetarian menus, in which no trace of animal meat or fish was used, here they serve a appetizing brunch in the morning. In addition to simple snacks, sweet pieces and cakes, we also serve **cold and hot drinks**, Additionally, they serve you **typical Australian meals** with products like bush tomatoes and finger limes.

Bittersweet Cafe Patisserie Menu



Non alcoholic drinks

WATER

Main courses

LASAGNA

Seafood

SALT AND PEPPER SQUID

Fingerfood

CALAMARES

American Food

EGGS BENEDICT

Hot drinks

TEA

Breakfast Menu

GRANOLA

Burgers

CHICKEN BURGER

Coffee

CAFÉ

Biscuits and Cookies

CHEESECAKE

Restaurant Category

GLUTEN FREE

Ingredients Used



EGG

CHICKEN

SALMON

These types of dishes are being served

BURGER

TOSTADAS

SALAD

Bittersweet Cafe Patisserie Menu



Bittersweet Cafe Patisserie

48 Watonga St, Port Macquarie I-
2444, Australia

Opening Hours:

Monday 06:20 -16:00
Tuesday 06:20 -16:00
Wednesday 06:20 -16:00
Thursday 06:20 -16:00
Friday 06:20 -16:00
Saturday 06:20 -16:00
Sunday 06:20 -00:00

Made with menulist.menu

 gallery image

