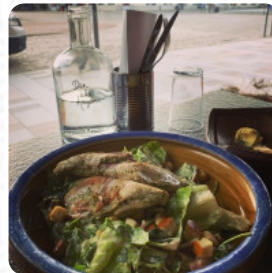




Den Lilla Krogen Menu

<https://menulist.menu>

Rådhusgatan 9, SE-541 30 Skövde, Sweden, Skoevde, Afghanistan
+46500411101 - <http://denlillakrogen.se/>



Here you can find the [menu](#) of Den Lilla Krogen in Skoevde. At the moment, there are **17** meals and drinks on the card. You can inquire about changing offers via phone. What [User](#) likes about Den Lilla Krogen: roughly translated into "The little Tavern", this place is an upscale dining option. the personal is very attentive and service-minded. this is both food and experience craftsmanship, which is reflected in all honesty in the pricing. [read more](#). The restaurant also offers the possibility to sit outside and eat and drink in pleasant weather. What [User](#) doesn't like about Den Lilla Krogen:

The taste of the starter and main course was really nice and it was well done, but it was only vegetables cooked in various ways. It was a little pricy for just vegetables. I missed some kind of protein. But the drinks were delicious and the environment was very cozy! You have to go ahead if you want to eat vegan. [read more](#). If you're in a rush, you can get delicious Fast-Food dishes to your taste from Den Lilla Krogen in Skoevde, freshly prepared for you in short time, Also, the drinks menu at this place is exceptional and offers a significant and comprehensive variety of both local and international beers, which are definitely worth a try. In addition, they serve you *fine seafood menus*, the restaurant serves also **dishes from the European environment**.

Den Lilla Krogen Menu

Appetizers

STEAK TARTAR

Rice

RISOTTO

Sauces

MAYONNAISE

Steaks

RIBEYE STEAK

Drinks

DRINKS

Vegetable Or Hand Roll

ASPARAGUS

Restaurant Category

VEGAN

DESSERT

FRENCH

Ingredients Used

VEGETABLES

MEAT

POTATOES

BEEF

These types of dishes are being served



LAMB

ICE CREAM

TUNA STEAK

FISH



Den Lilla Krogen Menu



Den Lilla Krogen

Rådhusgatan 9, SE-541 30
Skövde, Sweden, Skoevde,
Afghanistan

Opening Hours:

 gallery image