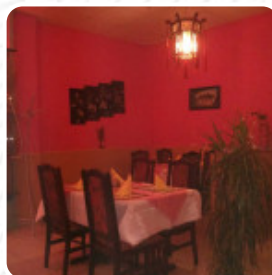




A&w Menu

<https://menulist.menu>

1 Chome-1-1 Matsuo, Naha, Okinawa 900-0014, Japan
+4981989175502,+493683400505 - <https://www.awok.co.jp>



A comprehensive [menu](#) of A&w from Naha covering all **18** menus and drinks can be found here on the food list. For **changing offers**, please get in touch via phone or use the contact details provided on the website. What [User](#) likes about A&w:

Definitely waaay better quality of burgers and frits than M. I loooove the free root beer refill. Your Burger bungalows are great, the Pommes are crispy. The staff was very nice, the place was also clean. Please open branches in Nagoya! [read more](#). What [User](#) doesn't like about A&w:

We really came here with high expectations but it was just on an alright side. I was excited since the place has poutine and I have never tried it, but my friend who is a Canadian that went with me confirmed that it was not authentic poutine, which is understandable, since they're just a [fast food](#) chain. We ordered hot dogs and two drinks too and we also thought hot dogs would taste more like the American style but i... [read more](#). Get excited in A&w from Naha for [versatile, fine Chinese cuisine](#) that's traditionally cooked in a wok, Naturally, you should also taste the tasty burgers, accompanied by sides like fries, salads, or wedges offered.

A&w Menu

Non alcoholic drinks

ROOT BEER

Alcoholic Drinks

BEER

Side dishes

POUTINE

Starters & Salads

FRIES

Fingerfood

ZWIEBELRINGE

Imbiss

CURLY FRIES

Drinks

DRINKS

These types of dishes are being served

BURGER

Ingredients Used



PORK MEAT

CHEESE

BEEF

CREAM CHEESE

PASTRAMI

ONION

TERIYAKI

POTATOES



A&w Menu



A&w

1 Chome-1-1 Matsuo, Naha,
Okinawa 900-0014, Japan

Opening Hours:

Thursday 09:00-21:00

Friday 09:00-21:00

Saturday 09:00-21:00

Sunday 09:00-21:00

Monday 09:00-21:00

Tuesday 09:00-21:00

Wednesday 09:00-21:00

Made with menulist.menu

 gallery image

