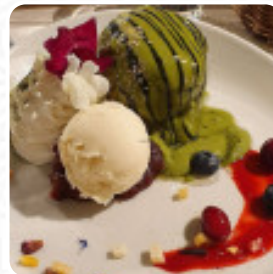




## ***Ain Soph.journey Menu***

<https://menulist.menu>

538-6, Nakanochō, Nakagyo-ku, Kyoto, Japan, 604-8042  
+81752511876 - <https://www.ain-soph.jp/journey-kyoto>



A **comprehensive menu** of **Ain Soph.journey** from Kyoto covering all 15 dishes and drinks can be found here on the food list. For **changing offers**, please get in touch via phone or use the contact details provided on the website. What **User** doesn't like about Ain Soph.journey:

The food was okey, nothing very special. Some burgers and currys. We went there to tried the vegan pancakes and at 2pm there were none of the pancakes available. We will try next time . Updated from previous review on 2024-03-22 [read more](#). The comprehensive diversity of coffee and tea specialties greatly enhances the value of a visit to Ain Soph.journey, and it's made with lots of freshly harvested vegetables, fish and meat, *healthy Japanese meals* prepared. The establishments serves a wide range of scrumptious and fresh juices, Furthermore, the **delicious treats** of this establishment sparkle not only on children's plates and in children's eyes.

# *Ain Soph, journey Menu*



## *Appetizers*

CREMA DI POMODORO

## *Pizza*

WESTERN

## *Sandwiches & Hot Paninis*

CHEESE BURGER

## *Hot drinks*

TEA

## *Burgers*

CHICKEN BURGER

## *Ingredients Used*

CHICKEN

TERIYAKI

*These types of dishes are being served*

DESSERTS

BURGER

## *Dessert*



CREPES

MATCHA

PANCAKE

## *Restaurant Category*

VEGAN

GLUTEN FREE

DESSERT

# *Ain Soph.journey Menu*



## *Ain Soph.journey*

538-6, Nakanochō, Nakagyo-ku,  
Kyoto, Japan, 604-8042

### **Opening Hours:**

Monday 12:00-19:00  
Tuesday 12:00-19:00  
Wednesday 12:00-19:00  
Thursday 12:00-19:00  
Friday 12:00-19:00  
Saturday 12:00-20:00  
Sunday 12:00-19:00

Made with [menulist.menu](https://menulist.menu)

 gallery image

