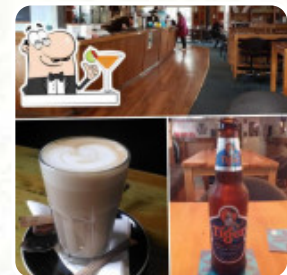
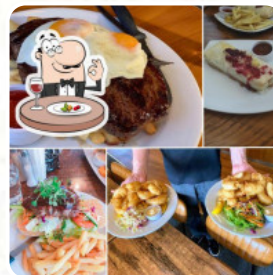


Stumble Inn Cafe Menu

<https://menulist.menu>

198 Mangorei Road, New Plymouth New Zealand, New Zealand

<http://www.stumbleinn.co.nz/>



Here you can find the menu of Stumble Inn Cafe in New Plymouth New Zealand. At the moment, there are 17 meals and drinks on the card. You can inquire about changing offers via phone. What [User](#) likes about Stumble Inn Cafe:

Eating is good. Service is good. They appreciate this five star rating. Love there coloring in comp though disappointed because I didn't win... could go home and weep, or maybe a bowl of stumble hair will cheat me. [read more](#). In pleasant weather you can even eat and drink in the outdoor area, And into the accessible spaces also come visitors with wheelchairs or physiological disabilities. What [Violet Foster](#) doesn't like about Stumble Inn Cafe:

Visited mid Saturday afternoon so kitchen was closed but cabinet and bar food available. Wedges were reasonable and nicely presented, nachos were underwhelming for price. Asked twice for water and staff seemed a little uninterested in serving us. Great iced drinks and booth was nice and cosy. Have previously had good meals and service here so would go back, could have just been one of those days. [read more](#). The Stumble Inn Cafe from New Plymouth New Zealand serves menus that you can find all over Europe, It's possible to chill out at the bar with a **cool beer** or other alcoholic and non-alcoholic drinks. In addition to simple snacks, sweet pieces and cakes, we also serve **cold and hot drinks**, and you can look forward to the tasty typical seafood cuisine.

Stumble Inn Cafe Menu



Pasta

FETTUCCHINE

Main courses

NACHOS

Appetizer

TEMPURA

Slushes

LIME

Coffee

COFFEE

Drinks

DRINKS

Condiments and Sauces

MUSHROOM

Non alcoholic drinks

WATER

LEMON

*These types of dishes are
being served*

SALAD

NOODLES

Ingredients Used

PRAWNS

BACON

SEAFOOD

CHICKEN

MEAT

BEEF

Stumble Inn Cafe Menu



Stumble Inn Cafe

198 Mangorei Road, New
Plymouth New Zealand, New
Zealand

Opening Hours:

Monday 09:30-22:30
Tuesday 09:30-22:30
Wednesday 09:30-22:30
Thursday 09:30-22:30
Friday 09:30-00:00
Saturday 09:30-00:00
Sunday 09:30-21:30

Made with menulist.menu

 gallery image

