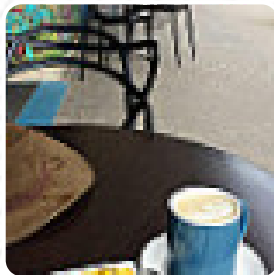
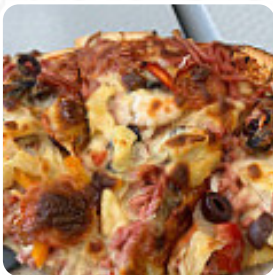




Blue Lime Cafe and Deli Menu

<https://menuweb.menu>

2 Weaver St, Stansbury, South Australia 5582, Australia, STANSBURY
+61888524439 - <http://www.facebook.com/Blue-Lime-Cafe-206361696061439/>



On this homepage, you can find the **complete menu** of **Blue Lime Cafe and Deli** from STANSBURY. Currently, there are **15** meals and drinks up for grabs.

Blue Lime Cafe and Deli Menu



Sushi Rolls

SUSHI

Hot Drink

HOT CHOCOLATE

Toast

TOAST

Restaurant Category

GLUTEN FREE

Starters & Salads

POTATO CHIPS

Ingredients Used

BANANA

CHOCOLATE

BACON

Warme Getränke

CAPPUCINO

These Types Of Dishes Are Being Served

Hot Drinks

COFFEE



SALAD

FISH

TOSTADAS

Coffee

LONG BLACK

BURGER

Blue Lime Cafe and Deli

2 Weaver St, Stansbury, South
Australia 5582, Australia,
STANSBURY

Opening Hours:
Monday 07:00-23:00
Tuesday 07:00-23:00
Wednesday 07:00-23:00
Thursday 07:00-00:00
Friday 07:00-00:00
Saturday 07:00-00:00
Sunday 07:00-23:00

Made with menuweb.menu

