



Sizzler Landmark Plaza Menu

<https://menulist.menu>

Japan, 〒220-0012 Kanagawa, Yokohama, Nishi Ward, Minatomirai, 2 Chome-2-1 1F
+81452225316 - <https://www.sizzler.jp/store/landmark/>



On this website, you can find the complete menu of Sizzler Landmark Plaza from Yokohama. Currently, there are **16** menus and drinks up for grabs. For *seasonal or weekly deals*, please contact the owner of the restaurant directly. You can also contact them through their website. What [User](#) likes about Sizzler Landmark Plaza:

I always go for the salad bar, which can be hard to find in Japan. Plenty of vegetables, fruits and salads to choose from. Soups are good. Yum! Texas cheese toast! Desserts are fun, too, a nice little treat. Every entrée comes with the salad bar. Steaks and fish are really good, but are a bit pricey. All in all, we will definitely go back. [read more](#). During meals, a refreshing drink is essential. In this **gastropub**, you will find not only delectable meals, but also a large and comprehensive assortment of good beers and other alcoholic drinks that compliment the food, and you can look forward to the delicious typical [seafood](#) cuisine. After the meal (or during it), you have the opportunity to also relax at the bar with a [alcoholic or non-alcoholic drink](#).

Sizzler Landmark Plaza Menu



Salads

TACOS

Pizza

TEXAS

Starters & Salads

POTATOE CHIPS

Sauces

CHEESE DIP

Pizza Snacks

CHEESE BREAD

Restaurant Category

HALAL

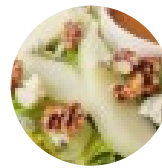
Ingredients Used

CHEESE

VEGETABLES

SEAFOOD

These types of dishes are being served



SALAD

FISH

DESSERTS

TOSTADAS

BREAD

STEAK

SOUP

Sizzler Landmark Plaza Menu



Sizzler Landmark Plaza

Japan, 〒220-0012 Kanagawa,
Yokohama, Nishi Ward,
Minatomirai, 2 Chome-2-1 1F

Opening Hours:
Saturday 08:00-22:00
Sunday 08:00-22:00
Monday 11:00-22:00
Tuesday 11:00-22:00
Wednesday 11:00-22:00
Thursday 11:00-22:00
Friday 11:00-22:00

Made with menulist.menu

