

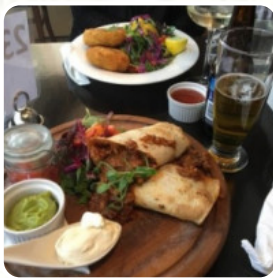


## ***Classic Cafe Menu***

<https://menulist.menu>

15 Murphy Street, Wellington 6011, New Zealand

+6448016868 - <https://www.fidelscafe.com>



Here you can find the menu of Classic Cafe in Wellington. At the moment, there are **15** dishes and drinks on the card. You can inquire about **seasonal or weekly deals** via phone. What [Ash Drake](#) likes about Classic Cafe: Always something new to try on the blackboard menu or cabinet and recently was Pad Thai. Perfect! Friendly, provide quick service and consistently a quality meal out [read more](#). At Classic Cafe from Wellington you have the opportunity to *try delicious vegetarian meals*, in which no trace of animal meat or fish was used, In the morning they serve a tasty breakfast here. There are also exquisite dishes typical for Europe, Furthermore, you can get sweet treats, cake, small snacks and chilled refreshments and hot drinks here.

# Classic Cafe Menu



## *Toast*

FRENCH TOAST

## *Thai specialties\**

PAD THAI

## *Ice cream\**

VANILLA

## *American Food*

EGGS BENEDICT

## *Hot drinks*

TEA

## *Condiments*

SYRUP

## *Restaurant Category*

FRENCH

*These types of dishes are being served*

TOSTADAS

## *Coffee*

CAPPUCCINO

MOCHA

ICED MOCHA

COFFEE

## *Ingredients Used*

BACON

BANANA

MILK

EGGS

# *Classic Cafe Menu*



## *Classic Cafe*

15 Murphy Street, Wellington  
6011, New Zealand

**Opening Hours:**  
Monday 07:30-22:00  
Tuesday 07:30-22:00  
Wednesday 07:30-22:00  
Thursday 07:30-22:00  
Friday 07:30-22:00  
Saturday 08:00-22:00  
Sunday 09:00-22:00

Made with [menulist.menu](https://menulist.menu)

