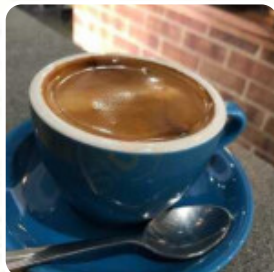




The Coffee Factory Menu

<https://menulist.menu>

13 Gawler St, Port Noarlunga, South Australia, Australia, 5167, PORT NOARLUNGA
+61883262339



Here you can find the [menu](#) of **The Coffee Factory** in [PORT NOARLUNGA](#). At the moment, there are 11 menus and drinks on the menu. You can inquire about *seasonal or weekly deals* via phone. What [User](#) likes about The Coffee Factory:

very nice place, had a nice atmosphere. I went back a few weeks with my friend who is not a vegan and she had a freshly squeezed juice (which was quite delicious) and speck and eggs where I had an amazing coffee and an even better breakfast. with mushrooms. pretty perfect. could not fail. [read more](#). In beautiful weather you can even have something in the outdoor area. In the The Coffee Factory from PORT NOARLUNGA you can enjoy dishes as they are common in Europe, In addition, you'll find sweet delicacies, cake, simple snacks and chilled refreshments and hot beverages here. Not to be overlooked is also the large selection of **coffee and tea specialties** in this restaurant, The atmosphere also makes the tasting of typical Western dishes and drinks an beautiful experience.

The Coffee Factory Menu



Starters & Salads

POTATOE CHIPS

For the small hunger

BAGEL

Tapas Calientes - Warme Tapas

CHORIZO

Soft drinks

JUICE

Vegan Burger

VEGAN BURGER

Breakfast Menu

BIG BREAKFAST

Condiments and Sauces

SAUCE

Restaurant Category

VEGAN

These types of dishes are being served

BURGER

Coffee

CAPPUCCINO

COFFEE

Ingredients Used



EGGS

MUSHROOMS

CHEESE

BACON

CORN

The Coffee Factory Menu



The Coffee Factory

13 Gawler St, Port Noarlunga,
South Australia, Australia, 5167,
PORT NOARLUNGA

Opening Hours:

Monday 08:00-16:00
Tuesday 08:00-16:00
Thursday 08:00-14:00
Friday 08:00-14:00
Saturday 08:00-16:00
Sunday 08:00-16:00

Made with menulist.menu

 gallery image

