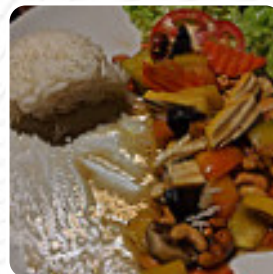




Salween River Menu

<https://menulist.menu>

23, Pradit Jong Kham Rd, Mae Hong Son, Thailand, 58000
+6653613421 - <http://www.salweenriver.com>



Here you can find the [menu](#) of *Salween River* in Mae Hong Son. At the moment, there are 15 courses and drinks on the card. You can inquire about [seasonal or weekly deals](#) via phone. What [User](#) likes about Salween River: a more upscale restaurant for Thailand with a mixed menu from west, thai and shan. we have the pad thai and khao soi as well as the shan potato cake. it was all very delicious and beautifully presented. the restaurant is located right next to the lake also what is a nice place to visit at night. [read more](#). What [User](#) doesn't like about Salween River:

I don't know why this place is so high. we had to wait about 1.5 hours for food (also for salate) and when it came it was very disappointing. the potato cakes and early rolls dripped oil, and my dish, with cashew nuts and steamed rice, was tasteless and the sauce was more of a strange oily goo (very oily). would not come back or recommend this place. [read more](#). Salween River from Mae Hong Son is a **comfortable café**, where you can have a small snack or cake with a hot coffee or a sweet chocolate, here they serve a comprehensive brunch for breakfast.

Surely, it's also a nice event to feel like in the **Wild West** once, to drink and eat like the cowboys or even the bandits with a beverage or two paired with onion rings and a nice tasty burger, The customers of the restaurant also consider the large selection of various coffee and tea specialities that the establishment offers.

Salween River Menu



10 most popular

MILK SHAKES

Starters & Salads

POTATOE CHIPS

*Thai specialties**

PAD THAI

Hot drinks

TEA

Coffee

COFFEE

Condiments and Sauces

CURRY

Main Dishes

RED CURRY

GREEN CURRY

Restaurant Category

VEGAN

VEGETARIAN

Ingredients Used

TOFU

FRUIT

These types of dishes are being served

SOUP

SALAD

BURGER

Salween River Menu



Salween River

23, Pradit Jong Kham Rd, Mae
Hong Son, Thailand, 58000

Opening Hours:

Monday 08:00 -22:00
Tuesday 08:00 -22:00
Wednesday 08:00 -22:00
Thursday 08:00 -22:00
Friday 08:00 -22:00
Saturday 08:00 -22:00
Sunday 08:00 -22:00

Made with menulist.menu

