

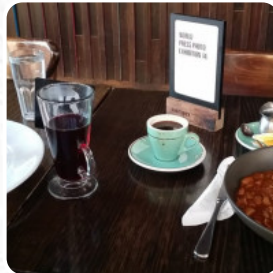


Mojo Waterfront Menu

<https://menulist.menu>

33 Customhouse Quay, Wellington Central New Zealand, New Zealand

<https://www.mojocoffee.co.nz/location/mojohq/>



Here you can find the [menu](#) of *Mojo Waterfront* in Wellington Central New Zealand. At the moment, there are 15 menus and drinks on the food list. You can inquire about [seasonal or weekly deals](#) via phone. What [Crackerjacker](#) likes about Mojo Waterfront:

It's just your usual mojo you would find everywhere else in the city and prob 100m down the street but I really like the outdoor eating area especially on a nice sunny day [read more](#). In pleasant weather you can even be served in the outdoor area. With the large diversity of **coffee and tea specialties**, a visit to Mojo Waterfront becomes even more attractive, You'll also find tasty bites, cake, small snacks and chilled refreshments and hot beverages here. If you decide to come for breakfast, you are offered a **hearty brunch**.

Mojo Waterfront Menu



Non alcoholic drinks

WATER

Drinks

STILL WATER

LE BAR DES VIKINGS

EAU GAZEUSE

***These types of dishes are
being served***

SALAD

TOSTADAS

Coffee

ESPRESSO

LONG BLACK

MOCHA

ICED MOCHA

COFFEE

Ingredients Used

CHEESE

MUSHROOMS

MILK

EGG

BEANS

Mojo Waterfront Menu



Mojo Waterfront

33 Customhouse Quay,
Wellington Central New Zealand,
New Zealand

Opening Hours:

Monday 07:00 -17:00
Tuesday 07:00 -17:00
Wednesday 07:00 -17:00
Thursday 07:00 -17:00
Friday 07:00 -17:00
Saturday 08:00 -14:00
Sunday 08:00 -14:00

Made with menulist.menu

