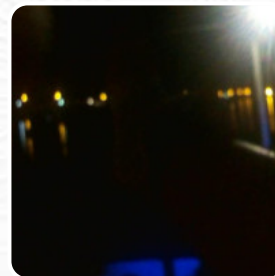




## ***Salty's Swansea Bridge Menu***

<https://menulist.menu>  
84 Pacific Hwy, Swansea, Australia  
**+61249714575**

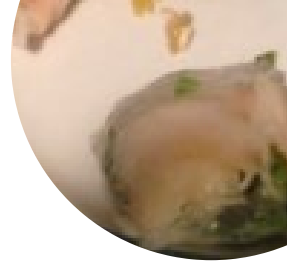


A comprehensive menu of Salty's Swansea Bridge from Swansea covering all 15 menus and drinks can be found here on the card. For **changing offers**, please get in touch via phone or use the contact details provided on the website. What [User](#) likes about Salty's Swansea Bridge:

I've been going to saltys for years, never had bad food or customer service. Best fish and chips ever. Cannot understand all the bad reviews, must be out of towners. [read more](#). The restaurant also offers the possibility to sit outside and eat and drink in nice weather. What [User](#) doesn't like about Salty's Swansea Bridge:

Was really looking forward to having good old fish and chips by the water. My family and I were so disappointed not only did they give us the wrong order which we only found out when we got to the park, but the chips were under cooked and all I we could taste was oil. Fish was rubbery. Lemon wedges were good though. I think the seagulls ate well that day. [read more](#). At Salty's [Swansea](#) Bridge in Swansea, [fine Australian meals](#) are freshly prepared for you with a lot of attention and the pure ingredients like *bush tomatoes and caviar limes*, For a snack, you can also have the yummy **sandwiches**, small salads and other snacks. Most menus are prepared quickly for you and served, and you can look forward to the fine traditional [seafood](#) cuisine.

# ***Salty's Swansea Bridge Menu***



## ***Non alcoholic drinks***

**WATER**

## ***Appetizers***

**SPRING ROLLS**

## ***Main courses***

**CALAMARI**

## ***Starters & Salads***

**POTATOE CHIPS**

## ***Starters***

**TARTARE**

## ***Beilagen & Extras***

**POTATO CHIPS**

## ***These types of dishes are being served***

**FISH**

**BURGER**

## ***Fish dishes***

**FISH AND CHIPS**

**FISH AND CHIPS**

**FISH**

## ***Ingredients Used***

**SEAFOOD**

**SCALLOPS**

**SALMON**

**COCONUT**

# ***Salty's Swansea Bridge Menu***



## ***Salty's Swansea Bridge***

84 Pacific Hwy, Swansea,  
Australia

### **Opening Hours:**

Monday 10:00-19:00  
Tuesday 10:00-19:00  
Wednesday 10:00-19:00  
Thursday 10:00-19:00  
Friday 10:00-19:00  
Saturday 10:00-19:00  
Sunday 10:00-18:30

Made with [menulist.menu](https://menulist.menu)

