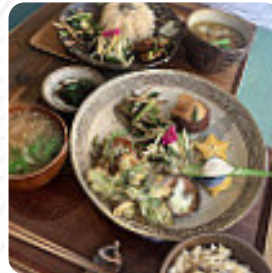




## ***Mana Menu***

<https://menulist.menu>  
1-6-9 Tsuboya, Naha, Japan  
**+81989431487**



Here you can find the [menu of Mana](#) in Naha. At the moment, there are **19** menus and drinks on the food list. You can inquire about [changing offers](#) via phone. What [User](#) likes about Mana: my third visit. under the total destruction of the vegan social life in japan, this restaurant is the only vegan place worth a visit to neara. highly recommended. many thanks and so on! excellent lunch. as others said, made love. no problem with foreigners, they speak good English. the prices are moderate for me at least. Too bad they only work until 3 o'clock. Otherwise I would visit them every day for dinner. [read more](#). In the Mana from Naha, using a lot of fresh vegetables, fish and meat, easy-to-digest, fine Japanese dishes are prepared, The tasty desserts of the establishment also shine not only on children's plates and in children's eyes. Not to be left out is the comprehensive selection of *coffee and tea specialties* in this restaurant.

# Mana Menu

## Süße Desserts

TIRAMISU

## Appetizer

TEMPURA

## Sweets & Ice

COOKIES

## Drinks

DRINKS

## Biscuits and Cookies

CHEESECAKE

## Condiments and Sauces

CURRY

## Sweets

CHOCOLATE CAKE

CHEESE CAKE

## Coffee

CHAI LATTE

COFFEE

## Restaurant Category

DESSERT

VEGAN

## Non alcoholic drinks



CHAI

LEMON

WATER

## These types of dishes are being served



DESSERTS

SALAD

SOUP

## Ingredients Used



CHICKEN

TRAVEL

TOFU

COCONUT

CHOCOLATE

CHEESE



# *Mana Menu*



## *Mana*

1-6-9 Tsuboya, Naha, Japan

**Opening Hours:**  
Wednesday 11:00-15:00  
Thursday 11:00-15:00  
Friday 11:00-15:00

Made with [menulist.menu](https://menulist.menu)

