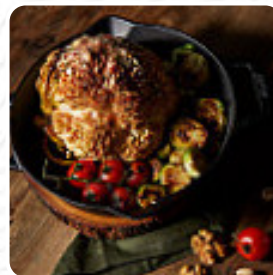
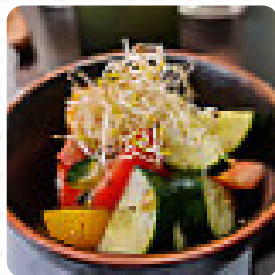




## ***The Earthling Cafe Menu***

<https://menulist.menu>

126/33 Park Ave, Sukhumvit Soi 63, Bangkok, Thailand, 10110  
+66644737188,+66895187464 - <https://www.earthlingbangkok.com>



A comprehensive menu of The Earthling Cafe from Bangkok covering all 23 courses and drinks can be found here on the menu. For changing offers, please get in touch via phone or use the contact details provided on the website. What [User](#) likes about The Earthling Cafe:

cool 100% vegan cafe serves breakfast dishes, burger, salate, wraps. not a large menu, but I always believe in quality over quantity. the food is delicious and well presented. I went with the breakfast sandwich that contains bacon flavored tempeh. I also had a coffee that was in order, not as good as eating unfortunately in my opinion. the interior is really nice, super cooled mood with friendly staff. would go bac... [read more](#). In beautiful weather you can even eat and drink in the outdoor area. What [User](#) doesn't like about The Earthling Cafe:

A pleasantly relaxing venue in cool colours and a quiet location. Great to get away from the city hustle. The online pictures of the food look amazing but a lot of the dishes we wanted need preordering and cannot be had if you just turn up. Menu has no images or Thai so it's not clear what you are getting or suitable for Thai guests. The portioning is odd, and tastes not always as you might expect. There was not enou... [read more](#). It's certainly always an event to be in a typical saloon and to eat; to feel like a cowboy for once with a beer and also the finger food like crispy fries, onion rings or a delicious burger, For a snack in between, the fine **sandwiches**, healthy salads, and other snacks are suitable. Of course, we must not forget the comprehensive selection of **coffee and tea specialties** in this restaurant, Furthermore, you can get sweet treats, cake, simple snacks and chilled refreshments and hot beverages here.

# *The Earthling Cafe Menu*



## *Süße Desserts*

CREPES

## *Extras*

EXTRA CHEESE

## *Side Orders*

MAYO

## *Breakfast*

BREAKFAST SANDWICH

## *Vegan Burger*

VEGAN BURGER

## *Ice cream\**

VANILLA

## *Milchshakes*

SMOOTHIE

## *Popular Items*

SMOOTHIES

## *Coffee*

COFFEE

## *Drinks*

DRINKS

## *Glamburgers*

MUSHROOM BURGER

## *Sandwiches & Hot Paninis*

HAMBURGER

CHEESE BURGER

## *Burgers*

CHEESE BURGER

CHICKEN BURGER

## *Condiments and Sauces*

MUSHROOM

HUMMUS

## *Restaurant Category*

TROPICAL

VEGAN

## *These types of dishes are being served*

PANINI

SANDWICH

SALAD

BURGER

## *Ingredients Used*

MILK

FRUIT

KING PRAWN

BACON

MEAT

CHEESE

CHICKEN

# *The Earthling Cafe Menu*



## *The Earthling Cafe*

126/33 Park Ave, Sukhumvit Soi  
63, Bangkok, Thailand, 10110

**Opening Hours:**  
Wednesday 10:00-21:30  
Thursday 10:00-21:30  
Friday 10:00-21:30  
Saturday 10:00-21:30  
Sunday 10:00-21:30

 gallery image

