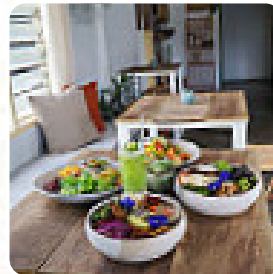
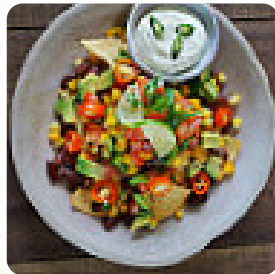




Kolma Menu

<https://menulist.menu>
Jalan Pantai Tengah, Langkawi, Malaysia, 07000
+601135847051



A complete [menu](#) of Kolma from Langkawi covering all 33 courses and drinks can be found here on the menu. For [changing offers](#), please get in touch via phone or use the contact details provided on the website. What [User](#) likes about Kolma:

this place is easy the best restaurant on the island, hands down. we are here many times and everyone is visiting is wonderful. the trendy decor, creative dishes, beautiful presentation, taste combinations. everything is amazing. I have a vegan birthday cake for the birthday of my wife and it was the best vegan cake I have eaten all over the world. they make one fall and try them cum. [read more](#). The premises in the restaurant are wheelchair accessible and can also be used with a wheelchair or physical limitations. If you want to spoil your palate with a bit of culinary flair, this is the place to be: The successful **Asian fusion cuisine** of the Kolma from Langkawi - a delicious mix of proven and the unexpected, Particularly scrumptious are also the Sashimi and specialties like Inside-Out from this establishment. Most dishes are prepared quickly for you and served, for breakfast they serve a **extensive breakfast** here.

Kolma Menu



Non alcoholic drinks

CHAI

Sandwiches & Hot Paninis

BURRITO

Main courses

SUSHI

Snacks

BROWNIES

Süßes

SNICKERS

Sandwiches

THE VEGGIE

Sweets

CHEESE CAKE

For the small hunger

BAGEL

Fresh Juices

CARROT

Milchshakes

SMOOTHIE

Slushes

LIME

Popular Items

SMOOTHIES

Drinks

DRINKS

Biscuits and Cookies

CHEESECAKE

Condiments and Sauces

MUSHROOM

Nut Milks

ALMOND MILK

Pasta

CARBONARA

SPAGHETTI CARBONARA

Soft drinks

LEMONADE

JUICE

These types of dishes are being served

SPAGHETTI

DESSERTS

Coffee

ESPRESSO

CHAI LATTE

COFFEE

Kolma Menu



Restaurant Category

DESSERT

MEXICAN

VEGETARIAN

VEGAN

Ingredients Used

TOFU

CHEESE

MANGO

MILK

Kolma Menu



Kolma

Jalan Pantai Tengah, Langkawi,
Malaysia, 07000

Opening Hours:
Wednesday 11:00-19:00
Thursday 11:00-19:00
Friday 11:00-19:00
Sunday 11:00-19:00

Made with menulist.menu

