



## ***Ps.cafe (ann Siang) Menu***

<https://menulist.menu>

Ann Siang 47, 47 Ann Siang Rd, Singapore 069720, Singapore

<http://www.pscafe.com>



The **menu of Ps.cafe (ann Siang)** from Singapore includes 67 meals. On average, meals or drinks on [the menu](#) cost about \$17.5. The categories can be viewed on the menu below. At Ps.cafe (ann Siang) from Singapore it's possible to savor delicious vegetarian meals, that were made without any animal meat or fish, Furthermore, the visitors of the establishment enjoy the comprehensive selection of the various *coffee and tea specialities* that the establishment has available. The **Asian fusion cuisine** is also an important part of Ps.cafe (ann Siang). Anyone who finds the usual and generally known menus too boring should approach with a willingness to experiment and try some exciting combination of ingredients consume, Besides, the light and healthy meals on the menu are among the favorite dishes of the visitors.

# Ps.cafe (ann Siang) Menu



## Salads

PS. CAESAR SALAD S\$32

## Appetizers

PAD THAI SALAD S\$38

## Antipasti

STICKY BBQ RIBS S\$53

## Soft drinks

COCA-COLA S\$5

## Spirits

AMERICANO S\$9

## Cold drinks

ICED LONG BLACK S\$10

## Warme Getränke

CAPPUCINO S\$9

## Water

ACQUA PANNA SPARKLING WATER S\$7

## Coffee and Tea

ENGLISH BREAKFAST TEA S\$9

## Bottled Beverages

SAN PELLEGRINO SPARKLING WATER S\$7

## Soft

MINT LIME SODA S\$14

## Teas and Infusions

EARL GREY TEA S\$9

## Gourmet Tea

JAPANESE SENCHA TEA S\$11

## Summer Cooler

LYCHEE LIME SODA S\$14

## Uncategorized

SUPERFOOD (V) S\$39

## Non alcoholic drinks

SPRITE S\$5

COKE ZERO S\$5

## Drinks

ICED AMERICANO S\$10

DRINKS

## Kids

KID'S JUNIOR CHEESEBURGER S\$21

KID'S BOLOGNESE S\$21

## Beers

STONE WOOD (AUSTRALIA) 6 PACK S\$66

STONE WOOD (AUSTRALIA) ALE S\$12

## PS.Cafe Menu Signatures

PS. CLUB S\$39

PS. IMPOSSIBLE BURGER (V) S\$43

# Ps.cafe (ann Siang) Menu



## Ingredients Used

CHOCOLATE	S\$11
BEEF	

## Pasta

GREEN GODDESS PESTO PENNE	S\$32
PS. SPAGHETTINI BOLOGNESE	S\$33
SPICY KING PRAWN AGLIO OLIO	S\$40

## Main courses

CALAMARI
CRAB
RIBS
LASAGNA

## Wines

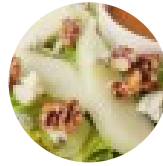
OLD COACH ROAD NZ PINOT NOIR	S\$74
DURVILLEA BY ASTROLABE SAUVIGNON BLANC	S\$66
ILAURI TAVO' ITALY PINOT GRIGIO	S\$53
GAROFOLI GUASCO ITALY MONTEPULCIANO	S\$61

## Tea & Infusions

LEMONGRASS AND BLUE PEA TEA	S\$11
HONEY LEMON SOOTHER	S\$12
PS. ICED LEMON LIME TEA	S\$12
REMEDY LEMON AND MINT KOMBUCHA	S\$10
FRESH MINT MOROCCAN TEA	S\$10

## These types of dishes are

## being served



SALAD
BURGER
TOSTADAS
COD
PASTA

## Dessert

ICED CAPPUCINO	S\$10
DOUBLE CHOCOLATE BLACKOUT CAKE	S\$24
M'S CARROT CAKE	S\$19
DARK CHOCOLATE BANANA CHEESECAKE	S\$22
STICKY DATE PUDDING	S\$22
FLORIDA KEY LIME PIE	S\$21

## Popular

PS. TRUFFLE SHOESTRING FRIES (V)	S\$24
TIGER BEER-BATTERED FISH AND CHIPS	S\$47
KID'S CARBONARA	S\$21
CHICKEN ROSSA PENNE	S\$32
PS. BURGER	S\$43
THAI CHICKEN BASIL BOWL	S\$36

## Coffee

LONG BLACK	S\$9
FLAT WHITE COFFEE	S\$9
MOCHA	S\$10
ICED MOCHA	S\$11
COFFEE	
LATTE	S\$9

# Ps.cafe (ann Siang) Menu



ICED LATTE

S\$10

# Ps.cafe (ann Siang) Menu



## Ps.cafe (ann Siang)

Ann Siang 47, 47 Ann Siang Rd,  
Singapore 069720, Singapore

**Opening Hours:**  
Monday 11:30 -23:00  
Tuesday 11:30 -23:00  
Wednesday 11:30 -23:00  
Thursday 11:30 -00:00  
Friday 11:30 -00:00  
Saturday 09:30 -00:00  
Sunday 09:30 -23:00

Made with [menulist.menu](#)

