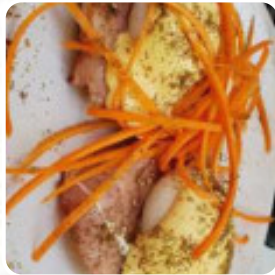




Chelsea Sushi Menu

<https://menulist.menu>
413a Nepean Hwy, Chelsea, Victoria 3196, Australia, Kingston
+61397721331



Here you can find the menu of Chelsea [Sushi](#) in Kingston. At the moment, there are 15 menus and drinks on the menu. You can inquire about [seasonal or weekly deals](#) via phone. What [User](#) likes about Chelsea [Sushi](#): Not only [sushi](#), the chefs here cater for almost 40 other popular traditional Japanese dishes, all cooked for and in front of the customer while you wait. Chicken curry don, #10 on the menu, is my personal favourite with perfectly cooked rice which is neither...More [read more](#). tasty [sushi](#) (e.g., Maki and Te-Maki), as well as in numerous additional variations, are prepared for you by Chelsea [Sushi](#) from Kingston, with fresh ingredients like fish, vegetables and meat, and a lot of fresh vegetables, fish and meat are used to prepare *easily digestible Japanese meals*. Also, they proffer you **delicious seafood menus**, Likewise, the visitors of the restaurant prefer the extensive selection of differing **coffee and tea specialities** that the establishment provides.

Chelsea Sushi Menu

Non alcoholic drinks

CHAI

Main courses

SUSHI

Dessert

MILKSHAKES

Indian

CHICKEN CURRY

Soft drinks

COCA-COLA

Milchshakes

SMOOTHIE

Main courses - Teriyaki

BEEF TERIYAKI

Condiments and Sauces

CURRY

P.J.'s Wings

TRADITIONAL

These types of dishes are being served

WRAP

NOODLES

Coffee

ICED MOCHA

MOCHA

COFFEE

Ingredients Used



GARLIC

EGG

BACON

CHOCOLATE

BEEF

SEAFOOD

TRAVEL

CHICKEN

TERIYAKI

CHICKEN TERIYAKI

AVOCADO

Chelsea Sushi Menu



Chelsea Sushi

413a Nepean Hwy, Chelsea,
Victoria 3196, Australia, Kingston

Opening Hours:

Monday 18:00 - 22:30

Tuesday 18:00 - 22:30

Wednesday 18:00 - 22:30

Thursday 18:00 - 22:30

Friday 18:00 - 22:30

Saturday 18:00 - 22:30

 gallery image