

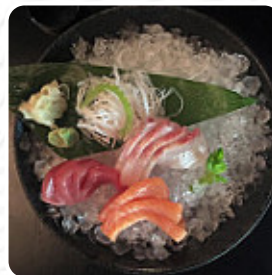
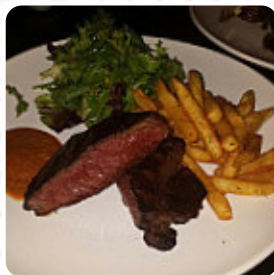
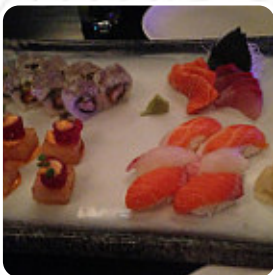


## ***Sabu Contemporary Japanese & Sake Menu***

<https://menulist.menu>

321 Church St, Parramatta, New South Wales 2150, Australia

+61296351088 - <http://www.sabu.com.au>



A comprehensive [menu](#) of Sabu Contemporary Japanese & Sake from Parramatta covering all 18 menus and drinks can be found here on the menu. For seasonal or weekly deals, please get in touch via phone or use the contact details provided on the website. What [User](#) likes about Sabu Contemporary Japanese & Sake: There are lots of restaurants in this area and Sabu is a good Japanese restaurant to go to if you like this type of food. They have a happy hour menu with each dish costing \$10. Our party selected most of the 8-10 selections and then went back and ordered more. The tempura vegetables was extremely good with a light crispy batter. Great food and a good price. Great for couples, families or a group. [read more](#). When the weather conditions is pleasant you can also eat outside, And into the accessible spaces also come visitors with wheelchairs or physical disabilities. What [User](#) doesn't like about Sabu Contemporary Japanese & Sake:

Unfortunately we never got to try the food at this restaurant, as no-one was interested in serving us. Two of us (both middle aged, reasonably presented women) walked in off the street on a Saturday night and were greeted by a frown and a look up and down. We asked if it were possible to eat without having made a booking. We were told yes and were distractedly waved towards a table. We sat down, and then waited and wa... [read more](#). Sabu

Contemporary Japanese & Sake The *brilliant Asian fusion cuisine* will thrill you, the exquisite mix of familiar flavors and exciting new creations will amaze!, and you can look forward to the tasty classic seafood cuisine. The preparation of the dishes is done authentically Asian, fine particularly are the **Maki** and specialties like Te-Maki that this restaurant is known for.

# ***Sabu Contemporary Japanese & Sake Menu***



## ***Sushi Rolls***

SPIDER ROLL

## ***Soups***

SEAFOOD SOUP

## ***Main courses***

SUSHI

## ***Extras***

WASABI

## ***Breakfast***

PAIN AU CHOCOLAT

## ***Appetizer***

TEMPURA

## ***Sonstiges***

SASHIMI

## ***Asian specialties***

EDAMAME

## ***Yaki-Grill Menü***

PRAWN

## ***Coffee***

COFFEE

## ***Condiments and Sauces***

PRAWNS

## ***P.J.&#39;S Wings***

TRADITIONAL

## ***These types of dishes are being served***

SOUP

FISH

## ***Ingredients Used***

EEL

SEAFOOD

VEGETABLES

ZUCCHINI

# ***Sabu Contemporary Japanese & Sake Menu***



## ***Sabu Contemporary Japanese & Sake***

321 Church St, Parramatta, New  
South Wales 2150, Australia

### **Opening Hours:**

Tuesday 12:00-15:00  
Wednesday 12:00-15:00  
Thursday 12:00-15:00  
Friday 12:00-15:00  
Saturday 12:00-15:00  
Sunday 12:00-15:00

Made with [menulist.menu](https://menulist.menu)

