

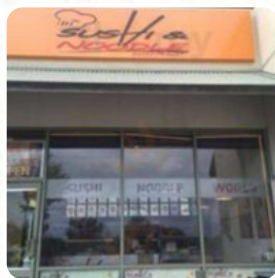


## ***Sushi Noodle World Menu***

<https://menulist.menu>

6/1868 Marmion Avenue, Clarkson, Wanneroo, Western Australia 6030, Australia,  
CLARKSON

**+61892747806**



On this site, you can find the **complete menu of Sushi Noodle World** from CLARKSON. Currently, there are 8 meals and drinks up for grabs. For seasonal or weekly deals, please contact the restaurant owner directly. You can also contact them through their website. What User likes about Sushi Noodle World: I discovered this little noodle place on my way home from my son's place. I love Laksa so I decided to order it to see how good it was. I wasn't disappointed. Lots of noodles, meat and seafood together with a rich curry sauce. Delicious....More read more. Sushi Noodle World from CLARKSON prepares for you **fine sushi (e.g., Maki and Sashimi)**, as well as in many additional variations, with fresh ingredients like fish, vegetables and meat, and you can look forward to the tasty classic seafood cuisine.

# ***Sushi Noodle World Menu***



## ***Appetizers***

**SATAY**

## ***Main courses***

**SUSHI**

## ***Sauces***

**CURRY SAUCE**

## ***Satay***

**CHICKEN SATAY**

## ***Condiments and Sauces***

**CURRY**

## ***Sauces***

**SAUCE**

## ***Malaysian / Oriental Cuisin***

**LAKSA**

***These types of dishes are being served***

**NOODLES**

**NASI GORENG**

***Dishes are prepared with***

**MEAT**

**SEAFOOD**

**CHICKEN**

**PORK MEAT**

**BEEF**

**TRAVEL**

# ***Sushi Noodle World Menu***



## ***Sushi Noodle World***

6/1868 Marmion Avenue,  
Clarkson, Wanneroo, Western  
Australia 6030, Australia,  
CLARKSON

**Opening Hours:**

