



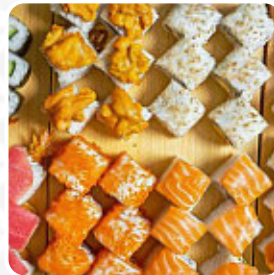
Ginsushi (kwun Tong) Menu

<https://menulist.menu>

Hong Kong SAR Kowloon Kwun Tong Kai Yuan Dao CSL

(+852)52186209, (+852)26820822 -

<https://www.foodpanda.hk/restaurant/v3jh/yoshinoya-kwun-tong>



Here you can find the menu of Ginsushi (kwun Tong) in Kowloon. At the moment, there are 40 meals and drinks on the food list. You can inquire about *changing offers* via phone. Ginsushi (kwun Tong) The **brilliant Asian fusion cuisine** will thrill you, the perfect balance of traditional dishes and exciting new creations will amaze!, The meals are usually prepared fast and fresh for you. The **dishes are prepared typically Asian**, Furthermore, the visitors of the restaurant enjoy the large variety of the various coffee and tea specialities that the restaurant has available.

Ginsushi (kwun Tong) Menu



Rice dishes

SLICED GINGER

Mains

COMBO FOR 6

Japanese specialties

MISO SOUP

Beverages

7 UP (CAN)

Paratha Combo

SPECIAL COMBO FOR 4

Modifiers

PEPSI (CAN)

Kitchen Appetizer

YAKITORI (2 PCS)

Combo

SPECIAL COMBO FOR 2

SPECIAL COMBO FOR 3

Dishes are prepared with

VEGETABLE

KIMCHI

Drinks

PEACH OOLONG TEA WITH YUZU

PASSIONFRUIT JASMINE TEA

MIRINDA (CAN)

Uncategorized

BEEF BOWL (LARGE)

GRILLED SABA FISH

PEPSI BLACK (CAN)

Popular

BEEF AND TERIYAKI CHICKEN BOWL

BEEF AND HOT SPRING EGG BOWL (LARGE)

TERIYAKI CHICKEN AND VEGETABLE BOWL (LARGE)

BEEF AND VEGETABLE BOWL (LARGE)

snack

HOT SPRING EGG (1PC)

SOFT BOILED EGG (1 PC)

MINI ODEN (X1)

ENOKI BEEF ROLL (3 PCS)

DEEP FRIED DUMPLINGS (5 PCS)

Shabu Shabu

PREMIUM SET FOR 2 (SUKIYAKI SOUP)
SERVED WITH BEEF OR PORK OR CHICKEN (2 PORTION)

OPT SET FOR 1 (SUKIYAKI SOUP)

SPECIAL SET FOR 2 (SUKIYAKI SOUP)
WITH 2 BEEF OR PORK OR CHICKEN PORTION

HOKKAIDO PORK SHABU IN TOMATO SOUP BASE

SHABU SET FOR 3 (SUKIYAKI SOUP)

Ginsushi (kwun Tong) Menu



Individual Meal

**BEEF AND VEGETABLE WITH HOT
SPRING EGG BOWL (LARGE)**

MUSHROOM, BEEF AND CHICKEN BOWL

**JAPANESE CURRY BEEF AND CHICKEN
BOWL**

**TERIYAKI CHICKEN, VEGETABLE AND
HOT SPRING EGG BOWL WITH GREEN
ONION**

**BEEF AND HOT SPRING EGG BOWL
WITH GREEN ONION**

**BRAISED PORK BELLY AND VEGETABLE
BOWL (LARGE)**

MUSHROOM, PORK AND CHICKEN BOWL

**JAPANESE CURRY PORK AND CHICKEN
BOWL**

PORK AND CHICKEN BOWL

Ginsushi (kwun Tong) Menu



Ginsushi (kwun Tong)

Hong Kong SARKowloonKwun
TongKai YuanDaoCSL

Opening Hours:

Monday 07:30 -23:00
Tuesday 07:30 -23:00
Wednesday 07:30 -23:00
Thursday 07:30 -23:00
Friday 07:30 -23:00
Saturday 07:30 -23:00
Sunday 07:30 -23:00

Made with menulist.menu

