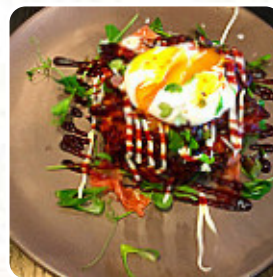
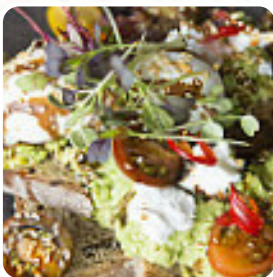




## ***Penta Menu***

<https://menulist.menu>

28 Riddell Pde, Elsternwick, Glen Eira, Victoria 3185, Australia, Melbourne  
(+61)395230716 - <http://www.pentaelsternwick.com.au/>



The menu of Penta from Melbourne includes 43 dishes. On average, dishes or drinks on the menu cost about A\$19. The categories can be viewed on the menu below. What [User](#) likes about Penta:

My family and I called in on Mother's Day without a booking and we're pleasantly surprised that we were able to get a table for 5 within minutes (albeit outside). My kids were wrapped there was a park across the road. We had a beautiful brunch. The potato rosti were a big favorite with my husband & kids. The Nutella panna cotta was

YUM but rich so we shared, the banana [sushi](#) was brilliant. The granola bowl was the be... [read more](#). The premises in the restaurant are wheelchair accessible and can also be used with a wheelchair or physiological limitations, Depending on the weather conditions, you can also sit outside and be served. What [User](#) doesn't like about Penta:

Penta is a beautiful little Elsternwick cafe with an interior that screams classy and refined, yet also encourages relaxation. Upon ordering their very famous nutella panacotta, I'd have to say I was a little disappointed with the portion size for the price paid. While it was something nice to eat, the flavours were not extraordinary enough to justify the price (the banana [sushi](#) was a little odd). However, the braise... [read more](#). At Penta in Melbourne, **exquisite Australian menus** are freshly served for you with a lot of affection and the unique products like bush tomatoes and caviar limes, the menu also includes **delectable vegetarian meals**. The meals are prepared according to typical Asian style, Besides, the successful blend of different menus with new and sometimes adventurous products is appreciated by the customers - a good case of Asian Fusion.

# Penta Menu



## *Appetizers*

HOMEMADE MEATBALLS A\$21

## *Primi*

SPINACH RICOTTA RAVIOLI A\$24

## *Main courses*

SUSHI

## *Salad*

ORANGE SALAD A\$18

## *Toast*

TOAST A\$9

## *Seafood*

GARLIC KING PRAWNS A\$20

## *Sauces*

HOLLANDAISE

## *Fish*

SMOKED SALMON

## *For the small hunger*

BAGEL

## *Risotto*

CHILLI PRAWN RISOTTO A\$26

## *Hamburger*

FRIED CHICKEN BURGER A\$23

## *Risotto - Reis*

RISOTTO AL POLLO A\$23

## *Breakfast Menu*

GRANOLA

## *Kids Meals*

CRUMBED CALAMARI A\$10

## *Large Plates*

STICKY PORK BELLY A\$17

## *Sea*

PAN SEARED SCALLOPS A\$16

## *Modern Classics*

BREAKFAST BOWL A\$20

## *Savory Crepes*

FIELD OF GREENS A\$19

## *American Dinners*

PORTERHOUSE STEAK A\$45

## *Breakfast and Lunch*

EGGS YOUR WAY ON TOAST A\$12

## *Coffee*

COFFEE

## *Hot Plate*

OKONOMIYAKI A\$20

# Penta Menu



## *Creations*

BAKED EGGS A\$20

## *Grassfed Beef Burgers*

THE LOT BEEF BURGER A\$24

## *Drinks*

DRINKS

## *It's the Simple Things*

BRAZILIAN ACAI BOWL A\$18

## *Beer Food*

PANKO CRUMBED CHICKEN STRIPS A\$10

## *Penta Kids*

KIDS SIZE PASTA A\$11

## *Plates Brunch*

WAFFLE

## *Restaurant Category*

MEXICAN

## *Salads*

BABY SPINACH A\$18

GREEK SALAD A\$17

## *Antipasti*

PESTO CREAM A\$18

PUMPKIN SALAD A\$18

## *These types of dishes are being served*

LAMB

ROASTED CHICKEN

## *Pasta*

SPAGHETTI CARBONARA A\$20

CREAMY GNOCCHI A\$23

SPAGHETTI BOLOGNESE A\$19

## *Mains*

NUTELLA PANNA COTTA A\$20

PENTA BENEDICT A\$20

HOKEY POKEY HOTCAKES A\$20

## *Dessert*

PANNA COTTA

DECONSTRUCTED SNICKERS A\$16

BAKLAVA PARFAIT A\$16

## *Starters*

ROASTED BEETROOT STACK A\$14

FRESH CURED TUNA BRUSCHETTA A\$14

PAN SEARED ATLANTIC SALMON A\$36

## *Main*

CHILLI SCRAMBLED EGGS A\$20

ROASTED BEETROOT A\$18

MACADAMIA PANKO CHICKEN BREAST A\$26

# Penta Menu



## *Breakfast / Lunch*

RYE FRENCH TOAST	A\$20
HERB FETA SMASHED AVO	A\$19
HERBY PANKO CHICKEN SCHNITZEL	A\$19

SCALLOPS	
BRUSSEL SPROUTS	A\$12
BEEF	
BACON	
CHICKEN	
KALE	
QUINOA	
POTATOES	
BANANA	
NUTELLA	

## *Dishes are prepared with*



EGG  
BUTTER  
BROCCOLI

WE HAVE

# *Penta Menu*



## *Penta*

28 Riddell Pde, Elsternwick, Glen  
Eira, Victoria 3185, Australia,  
Melbourne

**Opening Hours:**  
Tuesday 07:00-14:00  
Wednesday 07:00-14:00  
Thursday 07:00-14:00  
Friday 07:00-14:00  
Saturday 08:00-14:30  
Sunday 08:00-14:30

Made with [menulist.menu](https://menulist.menu)

