

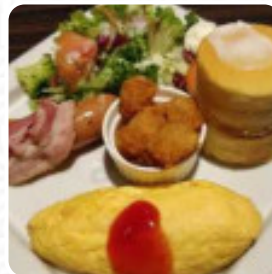


## *The Coffee Bean And Tea Leaf Menu*

<https://menulist.menu>

Bobbi Brown, Orchard Turn, 23,, Singapore

<https://www.coffeebean.com.sg>



Here you can find the menu of The Coffee Bean And Tea Leaf in Singapore. At the moment, there are **49** menus and drinks on the card. You can inquire about changing offers via phone. What [Jules](#) likes about The Coffee Bean And Tea Leaf:

Lovely beef-based dishes and authentic green tea and latte in a classic English-style setting with elegant wooden interiors! Hoshino offers more than coffee, so if you're on the lookout for a cozy little place to have lunch or dinner at, give this cafe slash restaurant a go. This one is strategically located at the heart of ION Orchard, making it suitable for a bit of coffee break. [read more](#). What [Jane Doe](#) doesn't like about The Coffee Bean And Tea Leaf:

Creamy Seafood Fusilli \$14.90) was good, with 2 prawns, 2 scallops, mustard cream sauce. Would've been better if they didn't use fillers for the seafood. Spicy Tuna Spaghetti \$11.90) was way spicier than expected but tasty as well. The bread was a nice touch, went well with the tuna sauce. [read more](#). In the The Coffee Bean And Tea Leaf from Singapore, a lot of emphasis is placed on the preparation of *healthy, tasty Japanese dishes* with freshly harvested vegetables, fish and meat, Furthermore, the guests love the successful combination of different meals with new and partially experimental ingredients - a good example of successful **Asian Fusion**. Also, they offer you delicious seafood dishes, The customers of the establishment are also thrilled with the extensive variety of various coffee and tea specialities that the restaurant offers.

# *The Coffee Bean And Tea Leaf Menu*



## *Salads*

MISTA

## *Süße Desserts*

CREPES

## *Toast*

FRENCH TOAST

## *Sweets*

CHOCOLATE CAKE

## *Starters & Salads*

RISOTTO

## *Chicken dishes*

BBQ CHICKEN

## *Chicken*

CURRY CHICKEN

## *Spirits*

AMERICANO

## *Beef-Gerichte*

BEEF CURRY

## *Beverages*

HOT COFFEE

## *Hot drinks*

TEA

## *Tea*

GREEN TEA

## *Sweets & Desserts*

RED VELVET

## *McCafé® Coffees*

ICED COFFEE

## *Pizza*

FUSION

WESTERN

## *Main courses*

TOPPINGS

CRAB

## *Drinks*

ICED AMERICANO

DRINKS

## *Dessert*

MATCHA

PANCAKE

## *Coffee*

HAZELNUT LATTE

COFFEE

## *Condiments and Sauces*

CURRY

PRAWNS

# *The Coffee Bean And Tea Leaf Menu*



## *Restaurant Category*



DESSERT

FRENCH

BBQ

## *These types of dishes are being served*



PASTA

SPICY TUNA

DESSERTS

SPAGHETTI

SOUP

ICE CREAM

BREAD

TOSTADAS

## *Dishes are prepared with*



STRAWBERRY

BEANS

SENF

CHICKEN

CHOCOLATE

SEAFOOD

WE HAVE

SCALLOPS

BEEF

MEAT

TRAVEL

SOFT SHELL CRAB

# *The Coffee Bean And Tea Leaf Menu*



## *The Coffee Bean And Tea Leaf*

Bobbi Brown, Orchard Turn, 23,,  
Singapore

### **Opening Hours:**

Monday 07:00-23:00  
Tuesday 07:00-23:00  
Wednesday 07:00-23:00  
Thursday 07:00-23:00  
Friday 07:00-00:00  
Saturday 07:00-00:00  
Sunday 07:00-23:00

Made with [menulist.menu](https://menulist.menu)

 gallery image

