

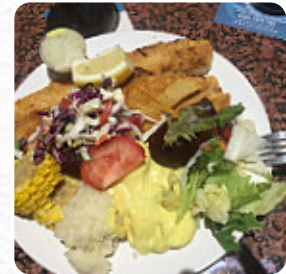
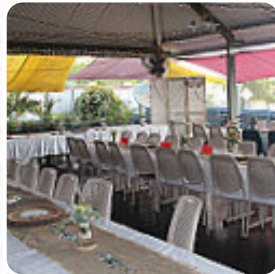


Enterprise Hotel Menu

<https://menulist.menu>

217 Gill St, Charters Towers, Queensland 4820, Australia

(+61)47872404,(+61)747872404 - <http://www.enterprisehotel.com.au/>



Here you can find the menu of Enterprise Hotel in [Charters Towers](#). At the moment, there are 37 menus and drinks on the card. You can inquire about changing offers via phone. What [User](#) likes about Enterprise Hotel: Recommended by the Big4 caravan Park, excellent choice. Extensive menu, great food, competitive prices. Friendly helpful staff. Large outdoor (undercover) dining area. Great place for groups or couples. [read more](#). The restaurant and its rooms are wheelchair accessible and thus usable with a wheelchair or physical disabilities, Depending on the weather, you can also sit outside and eat and drink. What [User](#) doesn't like about Enterprise Hotel:

We had read some great reviews so skipped the #1 pub in favour of this one. Excellent raised decking outdoor area, friendly staff and good drinks list. Unfortunately the meals weren't quite up to standard. While generous in size, the pork chops were tasty but very overcooked and I was glad I added a side order of mustard sauce to help with how dry they had become. Hubby's chicken Caesar had very dry chicken too and a ho... [read more](#). During a meal, a good drink is essential. In this gastropub, you not only get delicious dishes from the menu but also a comprehensive and particularly good diversity of **good beers and other alcoholic beverages** that go well with the food, Incidentally, there is the typical mood and obviously also the typical ambiance of a *Brasserie*. Look forward to the enjoyment of scrumptious vegetarian meals, It's possible to chill out at the bar with a **freshly tapped beer** or other alcoholic and non-alcoholic drinks.

Enterprise Hotel Menu



Alcoholic Drinks

BEER

Appetizers

FOCACCIA

Salad

CAESAR SALAD

Starters & Salads

POTATOE CHIPS

Steaks

SURF AND TURF

Tapas Calientes - Warme Tapas

GAMBAS AL AJILLO

Beef

RUMP

Bottles of Wine & Water

BOTTLE OF WINE

Drinks

DRINKS

Condiments and Sauces

PRAWNS

Sauces

SAUCE

Breakfast - Shmear Flavors

REGULAR

P.J.'s Wings

TRADITIONAL

Restaurant Category

BAR

Sauces

MUSTARD

MUSTARD SAUCE

Salads

SALAD

CAESAR SALAD

SEAFOOD SALAD

LETTUCE

These types of dishes are being served

LAMB

SALAD

STEAK

PORK CHOPS

OYSTERS

FISH

Enterprise Hotel Menu



Dishes are prepared with



BEEF

PARMIGIANA

PARMESAN

CHEESE

BACON

PORK MEAT

SENF

CHICKEN

EGGS

GARLIC

VEGETABLE

Enterprise Hotel Menu



Enterprise Hotel

217 Gill St, Charters Towers,
Queensland 4820, Australia

Opening Hours:

Monday 10:00-22:00
Tuesday 10:00-22:00
Wednesday 10:00-22:00
Thursday 10:00-22:00
Friday 10:00-01:00
Saturday 10:00-01:00
Sunday 10:00-19:00

Made with menulist.menu

