

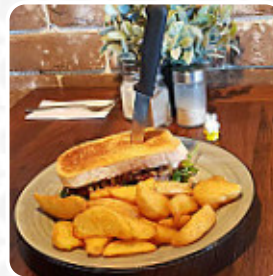


Rise & Grinde Menu

<https://menulist.menu>

1/31 Clareville Avenue, Sans Souci, Kogarah, New South Wales 2219, Australia,
SANDRINGHAM

(+61)95296575,(+61)295296575,(+61)295296675 -
<http://www.facebook.com/riseandgrindecafe/>



On this homepage, you can find the **complete menu** of Rise & Grinde from SANDRINGHAM. Currently, there are 44 meals and drinks up for grabs. For changing offers, please contact the owner of the restaurant directly.

You can also contact them through their website. What User likes about Rise & Grinde:

I was greeted by very cheerful staff and you could see from the get go they knew I wasn't a local but still were nice and chatted like I kinda was..Service was great and so was the food that came out super quick.Food was cooked great and presented well...Coffee was good as well , maybe a little hot but was still great and not bitter...Would definitely eat here again...Two thumbs up#burgerprodan #instagram [read more](#). The rooms on site are wheelchair accessible and can also be used with a wheelchair or physiological disabilities, Depending on the weather, you can also sit outside and be served. What User doesn't like about Rise & Grinde:

Been here a couple of times and the meals are always nice including last thursdays THAI BEEF SALAD. Unfortunately IT made a reoccurrence the next day . Over and over again. I was in agony all day. Sorry but I will really think before going there again. They need to look at their food handling practices , temperatures and storage. Luckily my elderly mother was ok , but she had a cooked meal. [read more](#). With the large range of **coffee and tea specialties**, a visit to Rise & Grinde becomes even more attractive, menus from Thailand are prepared here with the popular spices and (fish-) sauces. Also, they provide you delicious [seafood](#) meals, You can also discover delicious South American dishes in the menu.

Rise & Grinde Menu



Süße Desserts

CREPES

Pizza

FUSION

Eggs & Pancakes

OMELETTE

Main courses

CALAMARI

Toast

TOAST

Fish dishes

FISH AND CHIPS

Tex Mex

POTATO WEDGES

Starters & Salads

POTATOE CHIPS

Sauces

HOLLANDAISE

Dessert

MILKSHAKES

Spirits

AMERICANO

Tageskarte - Donnerstag

LINGUINE

American Food

EGGS BENEDICT

Vegetables

EGG ROLLS

Milkshakes

MILKSHAKE

Hauptgerichte - Chicken

FRIED CHICKEN

Yaki-Grill Menü

PRAWN

Hot drinks

TEA

Burgers

CHICKEN BURGER

Delicious Sandwiches

STEAK SANDWICH

Super Foods

AVOCADO TOAST

Fingerfood

ZWIEBELRINGE

Rise & Grinde Menu



CALAMARES

Coffee

LATTE

COFFEE

Restaurant Category

VEGETARIAN

AMERICAN

These types of dishes are being served

SANDWICH

STEAK

PASTA

BURGER

FISH

PANINI

TOSTADAS

Dishes are prepared with



ONION

CARAMEL

GARLIC

TOMATOES

CHICKEN

PORK MEAT

SEAFOOD

BACON

EGGS

EGG

Rise & Grinde Menu



Rise & Grinde

1/31 Clareville Avenue, Sans
Souci, Kogarah, New South
Wales 2219, Australia,
SANDRINGHAM

Opening Hours:
Monday 07:00-16:00
Tuesday 07:00-16:00
Wednesday 07:00-16:00
Thursday 07:00-16:00
Friday 07:00-16:00
Saturday 07:00-16:00
Sunday 07:00-16:00

Made with menulist.menu

