

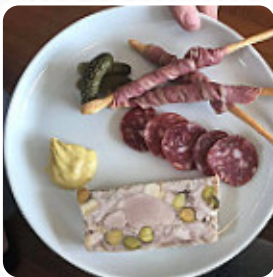


## ***Bistrot Plume Menu***

<https://menulist.menu>

56a Mount Pleasant Road, Belmont, City of Greater Geelong, Victoria 3216, Australia,  
Wandana Heights

(+61)33299782291,(+61)352458483 - <http://www.bistrotplume.com.au/>



A comprehensive [menu](#) of Bistrot Plume from Wandana Heights covering all 56 menus and drinks can be found here on the menu. For changing offers, please get in touch via phone or use the contact details provided on the website. What [User](#) likes about Bistrot Plume:

Our 2nd visit did not disappoint, salmon and bugs to start YUM rib eye to share, medium rare good yet not outstanding Small yet quality wine list Service is attentive and friendly Space is cosy and comfortable although not very French We will return [read more](#). The premises in the restaurant are wheelchair accessible and can also be used with a wheelchair or physical disabilities, Depending on the weather, you can also sit outside and eat.

What [User](#) doesn't like about Bistrot Plume:

This venue is very noisy in the back room and hard to have a decent conversation. Has always been the same in previous lives. Entree was great, main steak was nice, fries too many and dry, dessert was fantastic Service average by our waitress, not sure would go back again [read more](#). At Bistrot Plume from Wandana Heights, various *fine French dishes* are provided, and you may look forward to the tasty typical [seafood](#) cuisine. Not to be overlooked is also the large selection of coffee and tea specialties in this restaurant, In the morning a [hearty brunch](#) is offered here.

# ***Bistrot Plume Menu***



## ***Salads***

DETOX

## ***Non alcoholic drinks***

LEMON

## ***Alcoholic Drinks***

BEER

## ***10 most popular***

BAGUETTE

## ***Gnocchi***

GNOCCHI

## ***Snacks***

CROQUETTES

## ***Starters & Salads***

FRIES

## ***Little things***

CROISSANT

## ***Steaks***

STEAK FRITES

## ***Starters***

TARTARE

## ***Spirits***

MARTINI

## ***Beef***

RIB EYE

## ***Ice cream\****

VANILLA

## ***Hot drinks***

TEA

## ***Slushes***

LIME

## ***Sauces & Butters***

GARLIC BUTTER

## ***Asador's Steaks***

RIBEYE

## ***Breakfast - Shmear Flavors***

REGULAR

## ***Bigger Meals***

SMOKED BRISKET

## ***Hash Browns and Sides***

SCRAMBLED EGGS

## ***Bulk Meat By The Pound***

BRISKET

## ***Appetizers***

STEAK TARTAR

# ***Bistrot Plume Menu***



STEAK TARTARE

## ***Coffee***

ESPRESSO

COFFEE

## ***Restaurant Category***

DESSERT

FRENCH

COCKTAIL

## ***Dessert***

CRÈME BRÛLÉE

VANILLA ICE CREAM

TARTE TATIN

SORBET

## ***These types of dishes are being served***

DESSERTS

ICE CREAM

MUSSELS

LAMB

OYSTERS

STEAK

## ***Dishes are prepared with***



TOMATE

EGG

ESCARGOT

CARROTS

CARAMEL

CHEESE

APPLE

VEGETABLE

BACON

CRUDE

BEEF

ZUCCHINI

FRUIT

DUCK

BUTTER

GARLIC

CHICKEN

SEAFOOD

# ***Bistrot Plume Menu***



## ***Bistrot Plume***

56a Mount Pleasant Road,  
Belmont, City of Greater  
Geelong, Victoria 3216, Australia,  
Wandana Heights

**Opening Hours:**

 gallery image