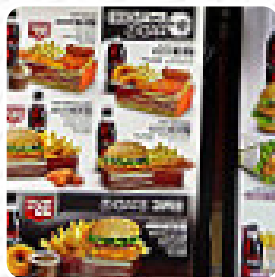




Red Rooster Menu

<https://menulist.menu>
303 Murray St, Colac, Victoria 3250, Australia
(+61)352322228 - <http://www.redrooster.com.au>



A **comprehensive [menu](#)** of Red Rooster from Colac covering all 16 courses and drinks can be found here on the menu. For **changing offers**, please get in touch via phone or use the contact details provided on the website. What [User](#) likes about Red Rooster:

On an organised coach trip on the Great Ocean Road, we were deposited in [Colac](#) for 30 minutes to get a quick dinner. Avoiding the usual international horrors, we came to Red Rooster, Australia's answer to Nando's. Two huge boxes of chicken and chips were served within two minutes. Hot, tasty, basic, but just what we needed towards the end of a long trip. Friendly service too. [read more](#). The diner and its premises are wheelchair accessible and thus usable with a wheelchair or physical disabilities. What [User](#) doesn't like about Red Rooster: We needed to grab a bite after long 6 hour drive. Red Rooster had fast service and clean bathroom. Also joined the Red Rooster reward Card and received \$5 voucher, cheers enjoyed the chicken wraps for a healthier choice. [read more](#). If you're in a hurry and need something quick, you can get delectable [Fast-Food menus just the way you like it](#) from Red Rooster in Colac, prepared for you in few minutes.

Red Rooster Menu



Appetizers

NUGGETS

Chicken

CHICKEN WINGS

Saucen, Chutneys & Extras

GRAVY

Hauptgerichte - Chicken

FRIED CHICKEN

Dinner Entrées

LAMB SHANK

Starters & Salads

POTATOE CHIPS

FRIES

These types of dishes are being served

LAMB

ROASTED CHICKEN

Dishes are prepared with

PEAS

CHICKEN

CHEESE

MEAT

POTATOES

VEGETABLES

SWEET POTATOES

Red Rooster Menu



Red Rooster

303 Murray St, Colac, Victoria
3250, Australia

Opening Hours:
Thursday 10:30 -21:15
Friday 10:30 -21:30
Saturday 10:30 -21:30
Sunday 10:30 -21:15
Monday 10:30 -21:15
Tuesday 10:30 -21:15
Wednesday 10:30 -21:15

Made with menulist.menu

