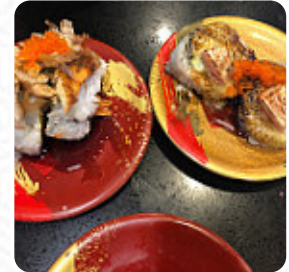




## ***Sushi Edo - Nundah Menu***

<https://menulist.menu>

Nundah Central | Sandgate Road, Brisbane, Queensland 4012, Australia, Brighton  
(+61)732605959 - <http://sushiedo.com.au>



A comprehensive menu of [Sushi Edo - Nundah](#) from Brighton covering all 22 menus and drinks can be found here on the menu. For [changing offers](#), please get in touch via phone or use the contact details provided on the website. What [User](#) likes about [Sushi Edo - Nundah](#):

在日本iPad 點餐，算是很正常。但在布里斯班算很科技。每一盤3.5，所以點菜時沒有價錢標示，我歐洲朋友以為吃到飽的。口味很適合洋人，但還算是道地吧！[read more](#). When the weather conditions is pleasant you can also eat and drink outside, And into the accessible spaces also come visitors with wheelchairs or physiological limitations. What [User](#) doesn't like about [Sushi Edo - Nundah](#):

Longe de ser um excelente [sushi](#), mas funciona bem para uma refeição rápida. Em função do grande movimento, os sushis não ficam muito tempo na esteira e são repostos conforme a demanda. Muitas alternativas c/ misturas incomuns, o que eu particularmente não gosto muito, prefiro os mais tradicionais. Valor por pratinho retirado da esteira. Várias bebidas (chás e sodas de marcas japonesas), diferentes. [read more](#). In the [Sushi Edo - Nundah](#) from Brighton, a lot of freshly harvested vegetables, fish, and meat are used to prepare **easy-to-digest, tasty Japanese meals**, The inventive fusion of different meals with fresh and occasionally daring ingredients is highly valued by the customers - a good example of Asian Fusion. Of course, we must not forget the extensive diversity of coffee and tea specialties in this locale, tasty particularly are the Sashimi and delicacies like *Inside-Out* that this restaurant is known for.

# *Sushi Edo - Nundah Menu*



## *Alcoholic Drinks*

BEER

## *10 most popular*

SALMON AVOCADO

## *Pizza*

PIZZA GRANDE

## *Main courses*

SUSHI

## *Drinks*

SODAS

## *Dessert*

MOCHI

## *Sonstiges*

SASHIMI

## *Japanese specialties*

MISO SOUP

## *Asian specialties*

EDAMAME

## *Noodle*

RAMEN

## *Spezial-Nudeln*

UDON

## *Hot drinks*

TEA

## *Tea*

GREEN TEA

## *P.J. & S Wings*

TRADITIONAL

## *Restaurant Category*

VEGETARIAN

## *These types of dishes are being served*

ICE CREAM

SOUP

## *Dishes are prepared with*

WE HAVE

CHICKEN

SCALLOPS

AVOCADO

MISO

# *Sushi Edo - Nundah Menu*



## *Sushi Edo - Nundah*

Nundah Central | Sandgate  
Road, Brisbane, Queensland  
4012, Australia, Brighton

**Opening Hours:**  
Sunday 11:30-21:30  
Monday 11:30-21:30  
Tuesday 11:30-21:30  
Wednesday 11:30-21:30  
Thursday 11:30-21:30  
Friday 11:30-21:30  
Saturday 11:30-21:30

Made with [menulist.menu](https://menulist.menu)

