

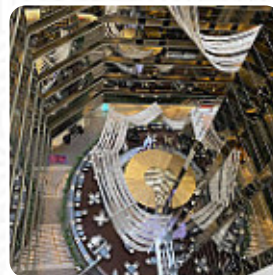


Sofitel Melbourne Menu

<https://menulist.menu>

25 Collins St | Level 35, Melbourne, Victoria 3000, Australia

(+61)396530000 - <http://www.sofitel-melbourne.com/en/the-atrium-bar-on-35.html>



Here you can find the [menu](#) of *Sofitel Melbourne* in Melbourne. At the moment, there are 30 meals and drinks on the card. You can inquire about seasonal or weekly deals via phone. What [User](#) likes about Sofitel Melbourne:

Being alone most nights I booked into hotel restaurant. Most meals were superb & enjoyable. Fish meal was disappointing, mash it was sitting on was a let down. I think it was just bad luck! Oysters were superb & so fresh. Beef was melt in your mouth. Very pleased with meals generally & service is good. [read more](#). When the weather is nice you can also eat outside, And into the accessible rooms also come customers with wheelchairs or physical disabilities. What [User](#) doesn't like about Sofitel Melbourne:

We have been going to the Sofitel bar for many years and this will be our last visit. It's tired and totally uninspiring these days. Where are the beautiful fresh flowers and the attentive service? Why have the majority of the tubs chairs been covered in some awful faux leather and why are they all so crammed in? There's nothing special about this bar anymore. They are still serving the same free snacks as they did y... [read more](#). At Sofitel Melbourne in Melbourne, there's a **diverse brunch** for breakfast where you can indulge feast, It's possible to chill out at the bar with a **cool beer** or other alcoholic and non-alcoholic drinks. Also worth mentioning at this restaurant are the menus from the Australian continent, Furthermore, you can get sweet treats, cake, simple snacks and chilled refreshments and hot beverages here.

Sofitel Melbourne Menu



Alcoholic Drinks

BEER

Appetizers

SPRING ROLLS

Pizza

PIZZA SPECIAL

Spirits

MARTINI

Hot drinks

TEA

Sushi Or Sashimi

OCTOPUS

Drinks

DRINKS

Condiments and Sauces

PRAWNS

Sauces

SAUCE

Appetizer -A

SPRING ROLL

Dessert

CHEESE BOARD

CREME CARAMEL

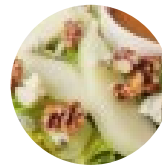
Restaurant Category

BAR

DESSERT

COCKTAIL

These types of dishes are being served



SALAD

FISH

DESSERTS

OYSTERS

Dishes are prepared with



CARAMEL

CHEESE

CHOCOLATE

LYCHEE

TRAVEL

STRAWBERRY

AVOCADO

BEANS

BEEF

KING PRAWNS

CHICKEN

Sofitel Melbourne Menu



Sofitel Melbourne

25 Collins St | Level 35,
Melbourne, Victoria 3000,
Australia

Made with menulist.menu

Opening Hours:

Monday 17:30 - 22:00

Tuesday 17:30 - 22:00

Wednesday 12:00 - 15:30; 17:30 -
22:00

Thursday 12:00 - 15:30; 17:30 -
22:00

Friday 12:00 - 15:30; 17:30 - 22:00

Saturday 17:30 - 22:00

Sunday 12:00 - 15:30; 17:30 - 22:00

