

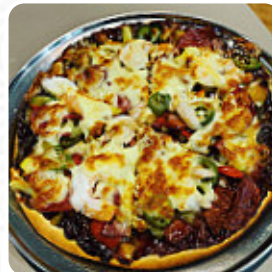


## ***Nate's Gourmet Pizza, Pasta and Grill Menu***

<https://menulist.menu>

75 Richmond Rd | Inside Reception Area of Barilla Holiday Park, Cambridge, Clarence, Tasmania 7170, Australia, Lindisfarne

(+61)362485483 - <http://www.natespizzas.com>



On this website, you can find the **complete [menu](#) of Nate's Gourmet Pizza, Pasta and Grill** from Lindisfarne. Currently, there are 29 menus and drinks available. For *seasonal or weekly deals*, please contact the owner of the restaurant directly. You can also contact them through their website. What [User](#) likes about Nate's Gourmet [Pizza](#), Pasta and Grill:

what a surprise to find this great restaurant in the holiday park, we decided to find our last night in hobart! Our meals were absolutely delicious and the calamari the best I ever had. nate told us his secret, but I bet I can't do it like that. large large fresh pizza went well with beautiful wine selection [read more](#). The diner is accessible and can therefore also be used with a wheelchair or physical limitations, Depending on the weather conditions, you can also sit outside and be served. At Nate's Gourmet [Pizza](#), Pasta and Grill in Lindisfarne you can taste delicious [vegetarian](#) meals, that are free from any animal meat or fish, You shouldn't miss the opportunity to try the delicate [pizza](#), baked fresh in an original manner. Furthermore, you can savor fresh breads and snacks, You can take a break at the bar with a **cool beer** or other alcoholic and non-alcoholic drinks.

# ***Nate's Gourmet Pizza, Pasta and Grill Menu***



## ***Mains***

FILLET

## ***Main courses***

CALAMARI

## ***Extras***

BRIE

## ***Snacks***

BRUSCHETTA

## ***Sauces***

MARINARA SAUCE

## ***Beef***

RUMP

## ***Cocktail***

MARGARITA

## ***Drinks***

DRINKS

## ***Sauces***

SAUCE

## ***Vegetable Or Hand Roll***

ASPARAGUS

## ***Restaurant Category***

VEGETARIAN

## ***Pasta***

CARBONARA

FETTUCCINE

## ***Süße Desserts***

BROWNIE

CHOCOLATE MOUSSE

## ***Pizza***

MARGHERITA

SEAFOOD PIZZA

## ***These types of dishes are being served***

STEAK

PASTA

FILET

PIZZA

SALAD

## ***Dishes are prepared with***



SEAFOOD

GORGONZOLA

CHOCOLATE

CHEESE

VEGETABLES

CRUDE

GARLIC

# ***Nate's Gourmet Pizza, Pasta and Grill Menu***



## ***Nate's Gourmet Pizza, Pasta and Grill***

75 Richmond Rd | Inside  
Reception Area of Barilla Holiday  
Park, Cambridge, Clarence,  
Tasmania 7170, Australia,  
Lindisfarne

**Opening Hours:**  
Sunday 17:00-21:00  
Monday 17:00-21:00  
Tuesday 17:00-21:00  
Wednesday 17:00-21:00  
Thursday 17:00-21:00  
Friday 17:00-21:00  
Saturday 17:00-21:00

Made with [menulist.menu](https://menulist.menu)

