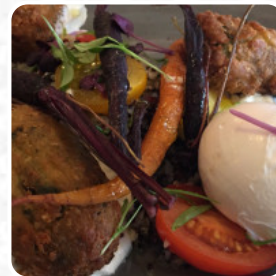
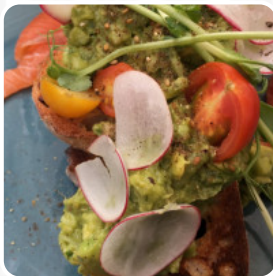




## *East Ivy Menu*

<https://menulist.menu>

| Burton Crescent, Ivanhoe East, Ivanhoe, Banyule, Victoria 3079, Australia, Boroondara  
(+61)394998185



Here you can find the menu of East Ivy in Boroondara. At the moment, there are 19 dishes and drinks on the card. You can inquire about *seasonal or weekly deals* via phone. What [User](#) likes about East Ivy: This small cafe is one of East Ivanhoe's hidden gems. Located off the main Lwr Heidelberg Road, East Ivy is the place to go for a quiet coffee with a friend any time of the day other than the busy peak lunch time. Service is quick, the menu is varied and food served is fresh and tasty. Parking is available around the corner where there is a large car park. [read more](#). When the weather conditions is nice you can also eat and drink outside. What [User](#) doesn't like about East Ivy:

This place started well when it first opened and we were excited to have a potentially good local venue, however they have just dropped the ball. The menu is tired, they can't keep any consistency in staff, and more often than not there are now more staff there than patrons....and they still forget ordered items over and over again. Waiting 20 mins for a coffee that never turns up...after having done the same thing 30... [read more](#). At East Ivy from Boroondara you have the opportunity to taste delicious [vegetarian](#) courses, in which no trace of animal meat or fish was used, Additionally, they provide you [typical Australian meals](#) with ingredients like bush tomatoes and finger limes. If you decide to come for breakfast, you are offered a **tasty brunch**, The customers of the establishment also appreciate the comprehensive selection of various **coffee and tea specialities** that the establishment has to offer.

# *East Ivy Menu*

## *Spaghetti*

CREMA

## *Sauces*

MUSTARD

## *Vegetarian dishes*

BROCCOLINI

## *Breakfast Plates*

HUEVOS RANCHEROS

## *Drinks*

DRINKS

## *Restaurant Category*

VEGETARIAN

## *Coffee*

LONG BLACK

COFFEE

## *These types of dishes are being served*

SALAD

BREAD

## *Dishes are prepared with*



EGG

KALE

EGGS

MILK

AVOCADO

CHEESE

SENF

PASTRAMI

BACON



# *East Ivy Menu*



## *East Ivy*

| Burton Crescent, Ivanhoe East,  
Ivanhoe, Banyule, Victoria 3079,  
Australia, Boroondara

**Opening Hours:**

Made with [menulist.menu](https://menulist.menu)

