

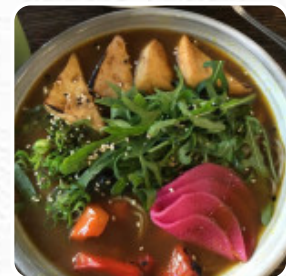


Purple Peanuts Japanese Cafe Menu

<https://menulist.menu>

620 Collins St, Melbourne, Victoria 3000, Australia

(+61)396209548 - <https://www.facebook.com/purplepeanuts/>



Here you can find the menu of Purple Peanuts Japanese Cafe in Melbourne. At the moment, there are 25 courses and drinks on the card. You can inquire about seasonal or weekly deals via phone. What [User](#) likes about Purple Peanuts Japanese Cafe:

We called in here for a late lunch after we got off our train and booked into our hotel around the corner-we only had a couple of [sushi](#) rolls each, but thoroughly enjoyed them and appreciated the very friendly service. Other diners meals looked good, we'll be back! [read more](#). When the weather is pleasant you can also have something outside. What [User](#) doesn't like about Purple Peanuts Japanese Cafe:

No longer open. If you want Japanese try another restaurant that is actually open. I am not being a Karen about this it is just closed down, so don't get your hopes up for Japanese fusion. [read more](#). In the Purple Peanuts Japanese Cafe from Melbourne, a lot of fresh vegetables, fish, and meat are used to prepare *healthy, tasty Japanese menus*, Likewise, the visitors of the restaurant prefer the large variety of various coffee and tea specialities that the restaurant provides. Look forward to the enjoyment of [delicious vegetarian dishes](#), tasty particularly are the **Sashimi** and delicacies like **Te-Maki** that this restaurant is known for.

Purple Peanuts Japanese Cafe Menu



Pizza

FUSION

Main courses

SUSHI

Extras

GINGER

Indian

CHICKEN CURRY

Sonstiges

SASHIMI

Japanese specialties

MISO SOUP

Sashimi Angebot

SALMON SASHIMI

Side Order

BROWN RICE

Hot drinks

TEA

Tea

GREEN TEA

Coffee

COFFEE

Drinks

DRINKS

Condiments and Sauces

CURRY

These types of dishes are being served



FISH

SOUP

DESSERTS

SALAD

Dishes are prepared with



CHICKEN

WE HAVE

TRAVEL

PORK MEAT

VEGETABLE

TERIYAKI

MISO

VEGETABLES

Purple Peanuts Japanese Cafe Menu



Purple Peanuts Japanese Cafe

620 Collins St, Melbourne,
Victoria 3000, Australia

Opening Hours:
Monday 10:00-20:30
Tuesday 10:00-20:30
Wednesday 10:00-20:30
Thursday 10:00-20:30
Friday 10:00-20:30
Saturday 10:00-20:30

Made with menulist.menu

