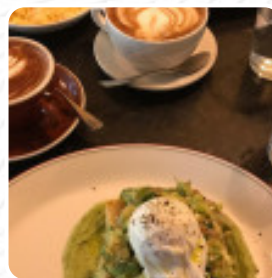




Fleur Depot De Pain Menu

<https://menuweb.menu>

The Blackman Hotel | 452 St Kilda Road, Melbourne, Victoria 3004, Australia
+61390391122 - <https://www.facebook.com/pages/Fleur-Depot-De-Pain/708388352519204>



A comprehensive [menu](#) of Fleur Depot De Pain from Melbourne featuring all 44 dishes and drinks can be found here on the menu.

Fleur Depot De Pain Menu



Breakfast

SCRAMBLED EGGS

Drinks

DRINKS

Pork

PORK BELLY

Starters & Salads

FRENCH FRIES

Sauces

HOLLANDAISE

Soft Drinks

WATER

Fresh Juices

CARROT JUICE

Water

MINERAL WATER

Hot Drinks

COFFEE

Bread

BAGUETTE

Egg Dishes

OMELETTE

Open Sandwich

CROQUE MADAME

French

CROISSANT

Soft Drinks & Mixers

SPARKLING MINERAL WATER

Brunch Delights

SMASHED AVOCADO

Light Stuff

FRESH FRUIT SALAD

Non Alcoholic Drinks

MINERAL WATER

WATER

Restaurant Category

FRENCH

BAR

Toast

AVOCADO TOAST

FRENCH TOAST

TOAST

Dessert

FRUIT SALAD

CREPES

FRESH FRUIT SALAD

Fleur Depot De Pain Menu



These Types Of Dishes Are Being Served

LAMB

BREAD

MUSSELS

MEAT

SALAD

TOSTADAS



SYRUP

FRUIT

AVOCADO

MINT

ONION

CUCUMBER

BACON

PORK MEAT

HONEY

COCONUT

CHOCOLATE

Ingredients Used

TUNA

Fleur Depot De Pain

The Blackman Hotel | 452 St
Kilda Road, Melbourne, Victoria
3004, Australia

Opening Hours:

Monday 06:30 -19:00
Tuesday 06:30 -19:00
Wednesday 06:30 -19:00
Thursday 06:30 -19:00
Friday 06:30 -19:00
Saturday 06:30 -19:00
Sunday 06:30 -19:00

Made with menuweb.menu

