

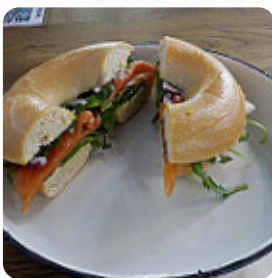


## Corner & Bench Menu

<https://menuweb.menu>

408 Bourke St, Melbourne, Victoria 3000, Australia

+61396024777 - <https://www.facebook.com/Corner-Bench-523646301094104/>



Here you can find the [menu](#) of **Corner & Bench** in Melbourne. At the moment, there are **40** courses and drinks on the menu.

# Corner & Bench Menu



## Non Alcoholic Drinks

WATER

## Smoothies

SMOOTHIE

## Pizza

SPECIAL PIZZA

## Schnitzel

SCHNITZEL

## Starters & Salads

POTATO CHIPS

## Chicken

CHICKEN SCHNITZEL

## Sauces

HOLLANDAISE

## Vegetarian Dishes

CARROT CAKE

## Fish

SMOKED SALMON

## Indian

ROTI

## Mexican Dishes

CHILLI SAUCE

## Fresh Juices

CARROT JUICE

## American Food

EGGS BENEDICT

## Hot Drinks

COFFEE

## Bread

BAGEL

## Egg Dishes

OMELETTE

## French

CROISSANT

## Brunch Delights

SMASHED AVOCADO

## Restaurant Category

MEXICAN

## Toast

TOAST

EGGS ON TOAST

## Dessert

COOKIE

CREPES

# Corner & Bench Menu



## Soft Drinks

WATER

LEMONADE

JUICE

## Ingredients Used

BISCUIT

BEEF

BACON

CHEESE

FETA

CREAM CHEESE

AVOCADO

## These Types Of Dishes Are Being Served



CHICKEN

LAMB

SANDWICH

SALAD

TOSTADAS

PANINI

BURGER

---

## Corner & Bench

408 Bourke St, Melbourne,  
Victoria 3000, Australia

### Opening Hours:

Monday 7:30-15:45

Tuesday 7:30-15:45

Wednesday 7:30-15:45

Thursday 7:30-15:45

Friday 7:30-15:45

Saturday 9:00-14:00

Made with [menuweb.menu](https://menuweb.menu)

