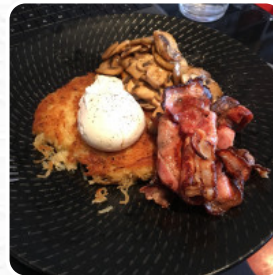




The Lansdowne Cafe Menu

<https://menulist.menu>

68 Lansdowne Crescent, Hobart, Tasmania TAS 7000, Australia, WEST HOBART
(+61)362346386,(+61)424840365 - <https://www.thelansdownecrescentcafe.com.au>



A **comprehensive [menu](#)** of **The Lansdowne Cafe** from WEST HOBART covering all **23** meals and drinks can be found here on the menu. For seasonal or weekly deals, please get in touch via phone or use the contact details provided on the website. What [User](#) likes about The Lansdowne Cafe:

We have had a few meals here now both breakfast and lunch. The meals are great and they have different specials on a Saturday. The staff are friendly, they make the best coffees. Highly recommend this as a place to visit [read more](#). The restaurant also offers the possibility to sit outside and be served in beautiful weather, And into the accessible rooms also come guests with wheelchairs or physiological limitations. What [User](#) doesn't like about The Lansdowne Cafe:

We have been going here for years and were always very happy. The food is still good, but the customer service is disappointing. I felt more welcomed at Hobart Pathology on the way to breakfast. [read more](#). At The Lansdowne Cafe in WEST HOBART, exquisite Australian menus are freshly made for you with a lot of affection and the unique ingredients like *bush tomatoes and caviar limes*, there are also delicious [vegetarian](#) dishes on the menu. It should not be forgotten that there is a large variety of [coffee and tea specialties](#) in this locale, For a snack in between, the tasty sandwiches, small salads, and other snacks are suitable.

The Lansdowne Cafe Menu



Süßes

MUFFINS

Beer

NEW YORKER

Breakfast Plates

HUEVOS RANCHEROS

Coffee

COFFEE

Super Foods

AVOCADO TOAST

Uncategorized

BLACK BEANS

Toast

FRENCH TOAST

TOAST

Hash Browns and Sides

OATMEAL

SCRAMBLED EGGS

Restaurant Category

GLUTEN FREE

FRENCH

These types of dishes are being served

LAMB

PANINI

BREAD

TOSTADAS

Dishes are prepared with

EGGS

BEANS

CHOCOLATE

CORN

AVOCADO

RASPBERRY

FETA

The Lansdowne Cafe Menu



The Lansdowne Cafe

68 Lansdowne Crescent, Hobart,
Tasmania TAS 7000, Australia,
WEST HOBART

Opening Hours:
Friday 07:30 -15:00
Saturday 08:00-15:00
Monday 07:30 -15:00
Tuesday 07:30 -15:00
Wednesday 07:30 -15:00
Thursday 07:30 -15:00

Made with menulist.menu

