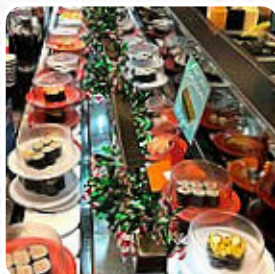




## ***Sushi Hub Menu***

<https://menulist.menu>  
55 Swanston St, Melbourne, Victoria 3000, Australia  
(+61)396396877 - <https://www.sushihub.com.au/>



The restaurant from Melbourne offers **93** different dishes and drinks on the menu at an average price of A\$7.

What [User](#) likes about [Sushi](#) Hub:

Nel mese di agosto sperimentano formula all you can eat in 45 min.di tempo...costo 29 dollari cad.!Buon prodotto, buona scelta e rapidità nel servizi..consigliato!! [read more](#). When the weather is good you can also eat outside, And into the accessible spaces also come visitors with wheelchairs or physiological limitations. What

[User](#) doesn't like about [Sushi](#) Hub:

I only bought [sushi](#) rolls, and the guy gave me only one wasabi, soy sauce and ingwer. So I asked for more wasabi and person who served me was very rude and man who worked in the inner laughed at me. I guess this a kind of horrible service should be expected from fake Japanese [sushi](#) store from Chinese. sighs [read more](#). During meals, a refreshing drink is essential. In this gastropub, you will find not only exquisite dishes, but also a large and comprehensive diversity of good beers and other alcoholic drinks that compliment the food, Furthermore, the visitors love the successful combination of different meals with new and partially experimental products - a nice example of successful [Asian Fusion](#). Also worth mentioning at this restaurant are the *courses from the Australian continent*, You can also unwind at the bar with a **freshly tapped beer** or other alcoholic and non-alcoholic drinks.

# Sushi Hub Menu



## Appetizers

TEMPURA PRAWN A\$5

## Main courses

SUSHI

## Salad

TERIYAKI CHICKEN SALAD A\$13

## Temaki

SPICY TUNA CUCUMBER A\$5

## Extras

GINGER

## Side dishes

TERIYAKI SAUCE A\$1

## Sushi Boxen

SALMON BOX A\$12

## Sushi Nigiri

INARI

## Sauces

MAYONNAISE A\$1

## Meat

STEAKHOUSE

## Extra Beilagen

SPICY MAYONNAISE A\$1

## Boxen

VEGETARIAN BOX A\$11

## Sauce

5 PACKS OF GINGER A\$1

## Makimono

LOBSTER SALAD INARI A\$3

## Uramaki

PRAWN KATSU AVOCADO A\$5

## Sonstiges

SASHIMI

## Asian specialties

EDAMAME A\$6

## Sashimi Angebot

SALMON SASHIMI A\$13

## Inari

TEMPURA VEGGIE INARI A\$3

## Bentos

ROLL BOX A\$17

## Mantel Vegan

TERIYAKI SALMON A\$5

## Meal Deals

VEGETARIAN SET FOR 2 A\$36

# Sushi Hub Menu



## Best Sellers

FRESH SALMON AVOCADO A\$5

## Dinner Entrées

LOBSTER SALAD A\$7

## Sashimi & Salad

FRESH PRAWN SALAD A\$13

## Sushi Or Sashimi

OCTOPUS

## Course #2

ASSORTED SASHIMI A\$17

## Sushi

SEAWEED SALAD INARI A\$3

## Inari Sushi

PLAIN INARI A\$3

## Condiments and Sauces

PRAWNS

## Chef's Suggestions

SEAFOOD COMBINATION A\$5

## Dragon Roll- Servis Par 10

SALMON DRAGON A\$3

## Wood Oven Gourmet Pizza

PRAWN AND AVOCADO A\$5

## Nigiri and Rice Ball Sushi

GRILLED SALMON NIGIRI A\$3

## Grilled Nigiri Sushi

GRILLED SCALLOP NIGIRI A\$3

## Salads

SEAFOOD SALAD A\$13

SEAWEED SALAD A\$7

## Sandwiches

CALIFORNIA SANDWICH A\$5

AVOCADO AND CUCUMBER A\$4

## Nigiri Sushi

TAMAGOYAKI A\$4

HOTATE

## Bebidas

FANTA 600ML A\$4

SPRITE 600ML A\$4

## Set Meals

SUSHI BOX SET A\$33

GLUTEN FREE SET FOR 2 A\$42

## Restaurant Category

BAR

VEGETARIAN A\$4

## Dishes are prepared with

TRAVEL

# Sushi Hub Menu



EEL

***These types of dishes are being served***

LOBSTER

SANDWICH

PANINI

## ***Maki Roll***

TEMPURA VEGGIE CUCUMBER	A\$4
LOBSTER SALAD CUCUMBER	A\$5
LOBSTER SALAD AVOCADO	A\$5
UNAGI AND EGG	A\$5

## ***Uncategorized***

CHICKEN AVOCADO NIGIRI	A\$3
MOUNT FRANKLIN SPARKLING WATER 450ML	A\$4
SALMON AND TUNA BOX	A\$12
TASMANIAN SALMON SALAD	A\$13

## ***Drinks***

COCA COLA CLASSIC 600ML	A\$4
MOUNT FRANKLIN WATER 600ML	A\$4
LIPTON LEMON ICED TEA 500ML	A\$4
JOE'S CLASSIC JUICE 350ML	A\$4
COCA COLA NO SUGAR 600ML	A\$4

## ***Choice of Additional Nigiri and Inari***

CRAB STICK SALAD INARI	A\$3
GRILLED PRAWN NIGIRI	A\$3

SPICY CRAB STICK NIGIRI A\$3

TEMPURA VEGGIE NIGIRI A\$3

TUNA SALAD INARI A\$3

## ***Nigiri***



SPICY CHEESE CHICKEN DRAGON A\$3

FRESH SALMON SANDWICH A\$4

BBQ UNAGI NIGIRI A\$3

FRIED EBI NIGIRI A\$3

GRILLED CHEESE AVOCADO NIGIRI A\$3

CRAB LEG NIGIRI A\$3

## ***Sushi Box***



MINI ROLL BOX A\$10

ASSORTED SUSHI BOX A\$19

BBQ UNAGI BOX A\$12

INSIDE OUT ROLL BOX A\$11

SALMON AND PRAWN BOX A\$12

SEAFOOD DELUXE BOX A\$19

SALMON DELUXE BOX A\$19

## ***Choice of Second Roll***

FRESH SALMON CUCUMBER A\$5

SPICY CHICKEN CUCUMBER A\$5

CRISPY CHICKEN AVOCADO A\$5

CRISPY CHICKEN CUCUMBER A\$5

SPICY CHICKEN AVOCADO A\$5

TERIYAKI CHICKEN AVOCADO A\$5

SEAWEED SALAD CUCUMBER A\$4

TERIYAKI CHICKEN CUCUMBER A\$5

TUNA SALAD CUCUMBER A\$5

# *Sushi Hub Menu*



TUNA SALAD AVOCADO

A\$5

# ***Sushi Hub Menu***



## ***Sushi Hub***

55 Swanston St, Melbourne,  
Victoria 3000, Australia

**Opening Hours:**  
Sunday 9:00-22:00  
Monday 9:00-22:00  
Tuesday 9:00-22:00  
Wednesday 9:00-22:00  
Thursday 9:00-22:00  
Friday 9:00-22:00  
Saturday 9:00-22:00

Made with [menulist.menu](https://menulist.menu)

