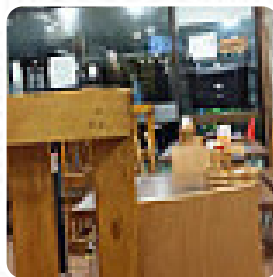




Natsumi sushi Menu

<https://menulist.menu>

549 Underwood Rd, Brisbane, Queensland 4123, Australia, Logan City
(+61)732197983 - <https://www.natsumi-sushi.com/>



A complete [menu](#) of Natsumi [sushi](#) from Logan City covering all 19 dishes and drinks can be found here on the card. For [changing offers](#), please get in touch via phone or use the contact details provided on the website.

What [User](#) likes about Natsumi [sushi](#):

There's no fridge display at this takeaway and dine in restaurant! Delicious [sushi](#) made ready for order. They also have a variety of other Japanese foods including curries and noodles. [read more](#). What [User](#) doesn't like about

Natsumi [sushi](#):

The don buri karage is excellent. Some of the best I've had in Brisbane! I always go back for it- however, one evening (quite late to closing) I went to get actual [sushi](#) from there and they were out of rsushi rice. This was surprising, but aside from that- excellent. [read more](#). Natsumi [sushi](#) from Logan City is a good option for a bar if you want to have a drink after work and hang out with friends, The barbecued food is freshly **prepared** here on an open flame. fresh vegetables, fish and meat are the main ingredients in the easily digestible Japanese cuisine of Natsumi [sushi](#), Particularly fine are also the [Sushi](#) and specialties like Sashimi from this restaurant.

Natsumi sushi Menu



Sushi Don

UNAGI DON

Main Course

GYOZA

Sonstiges

SASHIMI

Asian specialties

EDAMAME

Sashimi Angebot

SALMON SASHIMI

Spezial-Nudeln

UDON

Bottles of Wine & Water

BOTTLE OF WINE

Drinks

DRINKS

Restaurant Category

BBQ

Main courses

CRAB

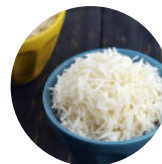
SUSHI

These types of dishes are being served

SOUP

NOODLES

Dishes are prepared with



TRAVEL

EEL

TOFU

UNAGI

AVOCADO

PORK MEAT

Natsumi sushi Menu



Natsumi sushi

549 Underwood Rd, Brisbane,
Queensland 4123, Australia,
Logan City

Made with menulist.menu

Opening Hours:

Monday 17:30-22:30

Tuesday 17:30-22:30

Wednesday 17:30-22:30

Thursday 17:30-22:30

Friday 11:30-14:30 17:30-22:30

Saturday 11:30-14:30 17:30-
22:30

Sunday 11:30-14:30 17:30-22:30

