

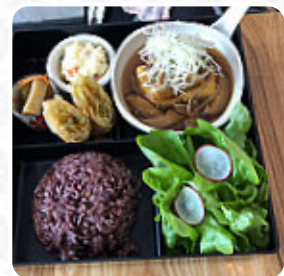
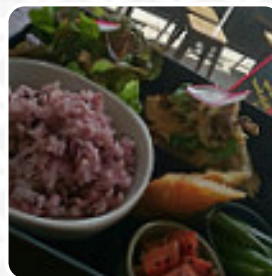
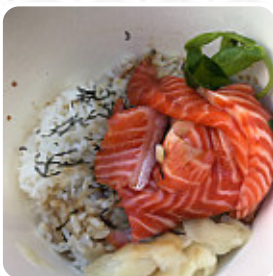


Japanese Kitchen Iroha Menu

<https://menuweb.menu>

487 High St, Northcote, Victoria 3070, Australia, Melbourne

+61385294102 - <http://www.kitchen-iroha.com.au/>



Here you can find the [menu](#) of **Japanese Kitchen Iroha** in Melbourne. At the moment, there are **20** meals and drinks on the card. We offer a modern take on traditional Japanese cuisine, emphasizing freshness, health-consciousness, creativity, seasonal produce, innovation, and the spirit of Omotenashi. Our dishes showcase the best of 'basic Japanese cuisine' using locally sourced ingredients and a combination of traditional flavors with contemporary cooking techniques.

Japanese Kitchen Iroha Menu



Sushi

SASHIMI

Drinks

BEER

Pork

PORK BELLY

Starters & Salads

POTATO CHIPS

Japanese Specialties

SAKE

Hot Drinks

TEA

Entrées

AGEDASHI TOFU

SPRING ROLLS

Indian

CHICKEN CURRY

CHICKEN CURRY

Restaurant Category

VEGETARIAN

VEGAN

These Types Of Dishes Are Being Served

MEAT

CHICKEN

FISH

Ingredients Used

TUNA

DUCK

PORK MEAT

MISO

TOFU

Japanese Kitchen Iroha

487 High St, Northcote, Victoria
3070, Australia, Melbourne

Opening Hours:

Tuesday 17:30-21:00

Wednesday 17:30-21:00

Thursday 17:30-21:00

Friday 17:30-21:00 12:00-14:00

Saturday 17:30-21:00

Made with menuweb.menu

