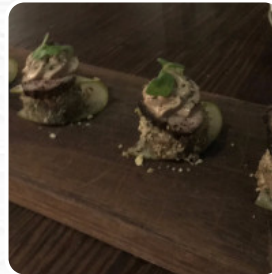




Strange Company Menu

<https://menulist.menu>

5 Nairn Street Fremantle WA 6160, Australia
(+61)na - <http://strangecompany.com.au/>



Here you can find the menu of Strange Company in Fremantle. At the moment, there are **20** meals and drinks on the food list. You can inquire about changing offers via phone. What [Helen C](#) likes about Strange Company: Very hip, awesome mixing, relaxed up to date crowd. Mid price range (unless you want to go top shelf as your choice). Bar staff really willing to mix to your taste or adventure preferences. [read more](#). When the weather conditions is pleasant you can also have something outside, And into the accessible spaces also come guests with wheelchairs or physical disabilities. What [Yraveler](#) doesn't like about Strange Company: When we arrived we were ignored and had to ask for the drinks/food menu at the bar. I went back to my table to discuss with my partner as to what we would order. I then had to wait at the bar to place our order as the person serving at the bar totally ignored me for at least 10 minutes as he was talking to a friend. Eventually I was able to place our order. I ordered a bottle of wine but they only had the blend and n... [read more](#). At Strange Company in Fremantle, exquisite Australian dishes are freshly made for you with a lot of affection and the unique products like *bush tomatoes and caviar limes*, There are also scrumptious South American menus in the menu. Furthermore, you'll find delicious American dishes, like for instance **burgers and grilled meat** on the menu, In addition, the latest games or races can be watched on the sports bar, which the guests also love.

Strange Company Menu



Alcoholic Drinks

BEER

Pizza

PIZZA SPECIAL

Vegetarian

CAULIFLOWER

Side dishes

ROASTED CAULIFLOWER

Starters & Salads

POTATOE CHIPS

Sauces

REMOULADE

Dessert

BANOFFEE PIE

Coffee

COFFEE

Copos Supremes

BANOFFEE

Drinks

GLASS OF WINE

DRINKS

Restaurant Category

COCKTAIL

BAR

These types of dishes are being served

LAMB

BREAD

SALAD

Dishes are prepared with

CHEESE

PICKLE

BLUE CHEESE

DUCK

Strange Company Menu



Strange Company

5 Nairn Street Fremantle WA
6160, Australia

Opening Hours:

Made with menulist.menu

